

LEVELLING  
COMPOUNDS  
SPACHTEL-  
MASSE

C FLOOR

GRUNDIERUNG  
PRIMER

KLEBSTOFF  
ADHESIVES

BETON  
DESIGN

LACK  
LACQUER

PFLEGEMITTEL  
MAINTENANCE

# PRODUCT PORTFOLIO

the strong connection

**eurocol**

# CONTACTS

**Forbo Eurocol Deutschland GmbH**  
August-Röbling-Str. 2 • D-99091 Erfurt  
Phone: + 49 (0)361 730 41 - 0 • Fax: + 49 (0)361 730 41- 91  
info.erfurt@forbo.com • www.forbo-eurocol.de

<b>Export Manager</b>	<b>Technical support</b>
<b>Natalia Kleinknecht</b> Mobile: + 49 (0)172 - 365 86 70, natalia.kleinknecht@forbo.com	Phone: + 49 (0)361 - 730 41 66
<b>Gerhard Lipp</b> Mobile: + 43 (0)664 - 130 26 55, gerhard.lipp@forbo.com	<b>Customer Service</b>
<b>Artur Woznica</b> Mobile: + 48 (0)603 - 632 486, artur.woznica@forbo.com	<b>Claudia Wiegand C/O</b> Phone: + 49 (0)361 - 730 41 61, claudia.wiegand@forbo.com
<b>Nils Simon Gonzales</b> Mobile: + 49 (0)172 - 774 04 66, simon.gonzales@forbo.com	<b>Susanne Köhn C/O</b> Phone: + 49 (0)361 - 730 41 50, susanne.koehn@forbo.com

# TABLE OF CONTENTS

<b>FLOORING INSTALLATION</b>	<b>04</b>	<b>PARQUET INSTALLATION</b>	<b>35</b>
PRIMER	<b>05 - 07</b>	PRIMER	<b>36</b>
SMOOTHING AND LEVELLING COMPOUNDS	<b>08 - 13</b>	ADHESIVES FOR PARQUET INSTALLATION	<b>36 - 38</b>
ADHESIVES	<b>14 - 23</b>	PARQUET LACQUER & PARQUET OIL-WAX	<b>39 - 43</b>
Adhesives for PVC and/or Rubber Floor Coverings	<b>15 - 16</b>	Wood putty and primers	<b>40</b>
Adhesives for Textile Floor Coverings	<b>17</b>	Parquet lacquer	<b>41 - 42</b>
Adhesives for Linoleum	<b>17 - 18</b>	Parquet oil-wax	<b>43</b>
Fixing Agents/Tackifiers	<b>18 - 19</b>		
Electrically Conductive Systems	<b>19 - 20</b>		
Contact- and Mounting Adhesives	<b>21</b>		
Supplementaries floor installation	<b>22</b>		
Underlay mats	<b>22 - 23</b>		
BETONDESIGN	<b>24 - 25</b>	CLEANING AND MAINTENANCE OF OILED AND WAXED PARQUET	<b>44</b>
SURFACE FINISHING	<b>26 - 27</b>	TOOLS & MORE	<b>45 - 51</b>
C FLOOR SYSTEM	<b>28 - 29</b>		
CLEANING AND MAINTENANCE	<b>30 - 31</b>		
ARTIFICIAL TURF AND SPORT FLOORING SYSTEMS	<b>32 - 34</b>		
Artificial turf	<b>33</b>		
Sport Flooring Systems	<b>34</b>		

The product descriptions in this catalogue contains only a small selection from our valid technical information.  
Please do not hesitate to ask for our full technical information and safety data sheets.

A wooden toy truck with four wheels and a pull string is positioned on a red surface with a fine, multi-colored speckle pattern. The truck is made of light-colored wood and is angled towards the bottom right.

# **FLOORING** INSTALLATION

the strong connection



PRIMER



# PRIMER

## 021 EUROBLOCK RENO LE

Two-component, epoxy resin, damp proof coating to block residual moisture of concrete and cement screed. Very good subfloor penetrating properties for surface consolidation. Adhesive promoter for levelling works on mastic asphalt, ceramic tiles, wooden chip-boards. Can be mixed with **846 or 847 Europlan Sand** to create spatula applicable epoxy-mortar to repair subfloors, closing cracks and holes. Can also be used to cover old remaining adhesives on subfloors before applying levelling compound or adhesive. Suitable for underfloor heating systems. Suitable for direct installation of parquet with approved Eurocol parquet adhesive. For indoor use only. Very low VOC emission. Solvent-free. **EMICODE EC 1 R Plus, GISCODE RE 1**

**Two-component damp proof coating**  
- damp proofing without moisture limit  
- water-free  
- very low emissions and odorless



**Unit size:** 10 kg combi (A+B)  
**Shipping unit:** 45/pallet  
**Consumption:** 300-500 g/m<sup>2</sup> per coating  
**Pot-life:** 40 minutes  
**Application:** roller, rubber spatula  
**Hardening time:** 16-48 hrs.



## 025 EUROBLOCK DEEP

Two-component, epoxy resin, damp proof coating to block residual moisture of concrete and cement screed up to 4 CM %. For the stabilization of unstable and wrecked screed with very good subfloor penetrating properties. For the protection of dry, moisture sensitive subfloors such as anhydrite, calcium sulphate and stone wood composites against surface water from levelling compounds or adhesives. Can be used on underfloor heating systems. Can be mixed with **846 or 847 Europlan Sand** to create spatula applicable epoxy-mortar to repair subfloors, closing cracks and holes. Can also be used to cover old adhesive on subfloors before applying levelling compound or adhesive. before levelling works, improved bonding by quartz sand blinding of still wet final coat of **025** with **846 Europlan Sand** (2-2,5 kg/m<sup>2</sup>). For indoor use only. Solvent-free. **GISCODE RE 1**

**Two-component damp proof coating**  
- damp proofing up to 4 CM %  
- water-free



**Unit size:** 10 kg combi (A+B)  
**Shipping unit:** 45/pallet  
**Consumption:** 300-500 g/m<sup>2</sup>  
**Pot-life:** 25 minutes  
**Application:** roller, rubber spatula  
**Hardening time:** 16-24 hrs.

## 026 EUROBLOCK MULTI

Dispersion-based, one-component, damp proof coating to block residual moisture of cement-based subfloors (screed) up to 4 CM %. Moisture blocking can be completed in one day. Subsequent levelling or adhesive works can be done within 7 days after final coat application. A residual moisture up to 3 CM % can be reached through direct installation of multilayer parquet with approved Eurocol parquet adhesive. Suitable for underfloor heating systems. For indoor use only. Very low VOC emission. Solvent-free. **EMICODE EC 1 Plus, GISCODE D 1**

**One-component damp proof coating**  
- Eco damp proofing up to 4 CM %  
- one-component, no mixing with hardener  
- no sanding needed



**Unit size:** 12 kg  
**Shipping unit:** 60/pallet  
**Consumption:** approx. 200 g/m<sup>2</sup> - for 3 coatings  
**Application:** roller  
**Intermediate drying time between coatings:** approx. 60 min.  
**Final drying time:** ca. 12 hrs.



## 042 EUROBLOCK TURBO

Ready to use, one-component, fast drying, damp proof coating to block residual moisture of absorbent, cement-based subfloors (screed) up to 5 CM %. Very good penetrating properties. Ideal to reinforce surfaces of absorbent cement- and calcium sulphate- (gypsum) based subfloors, before levelling or adhesion works. For subsequent levelling works quartz sand blinding with **846 Europlan Sand** is needed of still wet coat. Direct installation of multilayer parquet is possible with approved Eurocol parquet adhesive. Suitable for underfloor heating systems. For indoor use only. Very low VOC emission. Solvent-free. **EMICODE EC 1 R, GISCODE RU 1**

**One-component damp proof and surface reinforcement coating**  
- one-component, no mixing with hardener needed  
- fast damp proofing up to 5 CM %  
- water-free



**Unit size:** 11 kg  
**Shipping unit:** 80 pallet  
**Consumption:** 100-150 g/m<sup>2</sup>/coat  
**Application:** roller  
**Hardening time:** min. 2 hrs. (dry, tacky free surface)



# PRIMER

## 044-1 EUROBLOCK MULTI PLUS

Primer to be diluted with water for priming of absorbent and non-absorbent, mineral-based subfloors, wooden composites, mastic asphalt before levelling or adhesion works. Dilution depending on subfloor: cement screed (mixing ratio 1:2 with water), calcium sulphate (gypsum) screed, gypsum based floor boards such as Fermacel, Knauf (mixing ratio 1:1 with water). Bonding promoter before levelling works on terrazzo, ceramic, mastic asphalt, wooden composites (undiluted). Water resistant, especially for application of levelling compound in thick layers. Ensures overall equal absorbency. Fast film building and drying. For indoor use only. Very low VOC emission. Solvent-free. **EMICODE EC 1 Plus, GISCODE D 1**

**Universal primer**  
- dilutable concentrate  
- fast drying  
- highly water resistant  
- ideal before levelling works



**Unit size:** 1 kg, 10 kg  
**Shipping unit:** 12/carton, 384/pallet (1 kg), 60/pallet (10 kg)  
**Consumption:** 50-150 g/m<sup>2</sup>  
**Application:** roller  
**Drying time:** depending on application, approx. 30 min - 15 hrs.



## 048 EUROPRIMER PLUS

High-end, ready-to-use dispersion primer for absorbent and non-absorbent cement- and calcium sulphate- (gypsum) based subfloors (screed), gypsum-based floor boards such as Fermacel, Knauf, wooden composites, stone, ceramic and mastic asphalt. Ideal before levelling works to ensure overall equal absorbency, to bind dust and to cover old adhesive residues according to data sheet. Suitable for underfloor heating systems. Direct installation of wooden floors possible with recommended Eurocol Adhesive. For indoor use only. Very low VOC emission. Solvent-free. **EMICODE EC 1 Plus**

**Universal Primer under levelling compound and parquet adhesives**  
- high end, universal  
- ready to use  
- very high water resistance  
- blocks plasticizer migration



**Unit size:** 11,2 kg  
**Shipping unit:** 60/pallet  
**Consumption:** 80-90 g/m<sup>2</sup>  
**Application:** roller, brush  
**Drying time:** depending on application, approx. 60-120 min.  
Following levelling or adhesive works possible within 72 hrs.



## 050 EUROPRIMER MIX

Highly economical primer to be diluted with water for use on cement-based, absorbent subfloors (screed) to bind dust and ensure overall equal subfloor absorbency before levelling and adhesive works. To be diluted with water, depending on subfloor absorbency (mixing ratio up to 1:4-5 with water). For indoor use only. Very low VOC emission. Solvent-free. **EMICODE EC 1, GISCODE D 1**

**Dispersion primer**  
- dilutable concentrate



**Unit size:** 10 kg  
**Shipping unit:** 60/pallet  
**Consumption:** 30-60 g/m<sup>2</sup>  
**Application:** roller, brush, spray application  
**Drying time:** approx. 30 min.



## 070 EUROPRIMER FILL

Ready to use, one-component, fast drying primer to prime and fill (in one step) absorbent and non-absorbent cement- and calcium sulphate- (gypsum) based subfloors (screed), stonewood screed, ceramic tiles, wooden floorboards, parquet, mastic asphalt, gypsum-based floor boards such as Fermacel, Knauf. For priming and levelling of slight irregularities and joints on ceramic tiles, planks, parquet, wooden composites, gypsum-based floor boards before levelling works. Bonding promoter before levelling works on approved epoxy damp proof coats. Very low VOC emission. Solvent-free. **EMICODE EC 1 Plus, GISCODE D 1**

**Fast and filling primer**  
- priming and filling in one step  
- fast drying  
- no quartz sand blinding before leveling on damp proof coats



**Unit size:** 15 kg  
**Shipping unit:** 40/pallet  
**Consumption:** 100-200 g/m<sup>2</sup>, depending on subfloor  
**Application:** spatula, rubber slider, roller  
**Drying time:** 60-120 min.



the strong connection



# SMOOTHING AND LEVELLING COMPOUNDS

## SMOOTHING AND LEVELLING COMPOUNDS

### 802 EUROSTRIP BASIC

PE foam, self-adhesive strip to use for decoupling of floor-wall-connections before levelling works. For avoidance of sound bridges caused by levelling compounds in screed-wall connection and for rear ventilation in case of renovation of wooden floors.

**Edge insulation strip**  
- self-adhesive



**Roll length:**  
250 m/unit = 10 rolls à 25 m  
**Width/thickness:**  
20 mm x 5 mm  
**Shipping unit:** 10 rolls/bag

### 811 EUROPLAN FIBRE

Special fiber to be added to cement- and calcium sulphate- (gypsum) based levelling compounds to reinforce and to increase the load bearing capacity, stability and durability of levelling compounds, to minimize inherent tension formation during drying process and to increase their pressure resistance. Recommended when levelling compounds are to be applied on mastic asphalt and on gypsum flooring panels. Easy to mix. Low consumption: one bag sufficient for one 25 kg sack of levelling compound.

**Fiber to reinforce levelling compounds**  
- crack repair



**Unit size:** 250 g/bag  
**Shipping unit:** plastic bucket with 50 bags  
**Fiber length:**  
mix of 6 mm - 12 mm  
**Application:** strewn into levelling compound during mixing procedure after mixing with water

### 816 EUROPLAN REPAIR DUO

Good filling, self-flowing, two-component grouting compound for professional filling of cracks and holes in screeds, concrete, natural and artificial stone. To be mixed with **846 or 847 Europlan Sand** creating a multi-functional reactive mortar. Can also be used for gluing different recommended materials together. Such as ceramic, wood, glass, plastics. Note: For crack repair, use Eurocol wave connectors. For fast crack repair use **913 Europlan Silicat**.  
**GISCODE RE 5**

**Self-flowing Epoxy Repair mortar**  
- crack repair  
- joint and holes filling compound



**Unit size:** 0,9 kg + 0,1 kg hardener  
**Shipping unit:** 10/carton  
**Consumption:** depending on crack/hole size  
**Processing time:**  
approx. 20 min.  
**Drying time:** approx. 3 hrs.

### 846 EUROPLAN SAND/847 EUROPLAN SAND FINE

Cleaned, fire dried quartz sand to be used for blinding onto still wet Epoxy- or PU - primer surface before levelling works. For extension of suitable filling compounds. Also suitable as extender to be mixed with approved Eurocol 2-K Epoxy primers or 2-K Epoxy filling compounds to produce reactive mortars for closing gaps, cracks and holes, for smoothing irregularities and highly textured surfaces.

**QUARTZ SAND**  
coarse (grain size 0,4 - 1,0 mm)  
fine (grain size 0,1 - 0,4 mm)



**Unit size:** 25 kg  
**Shipping unit:** 40/pallet  
**Consumption:**  
2000 - 2500 g/m<sup>2</sup> for sanding

## SMOOTHING AND LEVELLING COMPOUNDS

### 900 EUROPLAN DSP

Ready-to-use, solvent-free, spatula applicable, plasticizer resistant smoothing compound. Remains elastic and flexible after drying. Can be applied in thin layers. Ideal for surface levelling on deformable subfloors, such as granulate underlay (insulation) mats, point elastic sports floors, suspended floors, chip boards, composite boards. Suitable as plasticizer migration barrier (e.g. vinyl on vinyl installation), to close joints and screw holes before installation works on wooden chip boards. Also applicable on thoroughly cleaned, used resilient floor coverings (e.g. vinyl, CV, rubber) before further subsequent installation works.

**GISCODE D 1**



For wintertime shipments, frost-resistant equivalent:  
**578 Eurosafe Polaris Uni**

**Dispersion-based surface smoothing for deformable subfloors**  
- ready to use  
- plasticizer barrier



**Unit size:** 14 kg  
**Shipping unit:** 44/pallet  
**Consumption:** 0,3 - 1,2 kg/m<sup>2</sup>  
**Accessibility:** 1 - 3 hrs.  
**Ready for laying:** approx. 24 hrs.

### 910 EUROPLAN PU DUO

Self-flowing, flexible, highly durable hardening, two-component PU-based compound, applicable both as top coating or for levelling works before subsequent installation works. High load bearing, therefore ideal for industrial applications where high traffic is to be expected (fork-lift wheel resistant). Hardens to a hard elastic compound, therefore also ideal for deformable floor constructions such as sports floors and suspended floor installations. Ideal for levelling, thoroughly glued down old resilient and wooden floor coverings (rubber, vinyl, parquet) before subsequent works (renovation without floor replacement). For installation works on rubber-granulate underlay mats, suitable as self levelling compound before installation of resilient floor coverings and wooden floor after fine sanding and only with recommended adhesives. Can be used to fill joints and to level mastic asphalt. Also can be used as top coat or as filling primer on mastic asphalt and also on metal sheets. Recommended for preparation of subfloor under **BetonDesign** (ConcreteDesign).

**EMICODE EC 1 R Plus, GISCODE RU 1**

**Two-component PU-based levelling compound**  
- self-levelling top- and underlay coat  
- highly durable, for indoor and dry outdoor application  
- gray  
- system component for **BetonDesign**



**Unit size:** 4,86 kg combi (A+B), 9,72 kg combi (A+B)  
**Shipping unit:** 48/pallet (9,72 kg), 60/pallet (4,256 kg)  
**Consumption:** approx. 1,3 kg/m<sup>2</sup>/mm  
**Processing time:** approx. 40 min.  
**Hardening time:** 6 - 8 hrs.



suitable for  
**BETONDESIGN**

### 913 EUROPLAN SILICAT

Two component, silicat-based adhesive which can be used to bond wood, metal profiles, glass on porous substrates. Ideal for filling cracks and holes in mineral screed. Shipping unit contains 2 bags with 20 wave connectors each. Suitable on underfloor heating systems.

Very low VOC emission according to

**EMICODE EC 1 R Plus**

Supplementary products: **Wave connectors, 846 Europlan sand.**

**Two-component filling compound and adhesive**  
- crack repair  
- hardens quickly  
- low emissions



**Unit size:** 2 x 0,3 l bottle  
**Shipping unit:** each 5 bottles resin + 0,3 l hardener  
**Consumption:** depends on size of the crack/hole  
**Processing time:** approx. 8 min.  
**Resilience:** depends on application, approx. 20 min.



### WAVE CONNECTORS

Wavy metal clips to be inserted into floor-cracks before filling and closing them with recommended crack-closing compounds.



**Unit size:** 100 pieces/bag

## SMOOTHING AND LEVELLING COMPOUNDS

### 920 EUROPLAN ALPHY

High quality, universal, self-levelling compound very low tension for medium to high traffic. Alpha-hemihydrate-based for levelling all kinds of screed and concrete subfloors, gypsum-based floor boards such as Fermacel, Knauf. Ideal for less stable subfloors. Applicable up to 20 mm, mastic asphalt 8 mm layer thickness. To prepare subfloor for subsequent installation works. Pumpable or applicable with spike roller and notched trowel. Suitable on underfloor heating systems.

For indoor use only.

Very low VOC emission.

**EMICODE EC 1 Plus, GISCODE CP 1, Blue Angel Label** (high standard certified, environmentally friendly product) UZ 113

**High-end gypsum-based self levelling compound**  
- self-levelling  
- up to 20 mm  
- very low-tension setting



**Unit size:** 25 kg  
**Shipping unit:** 42/pallet  
**Consumption:** approx. 1,4 kg/m<sup>2</sup>/mm  
**Accessibility:** 2 - 3 hrs.  
**Ready for laying:** at 3 mm thickness, approx. 24 hrs.



### 928 EUROPLAN WHITE

Universal self-levelling compound, curing with low tension with medium traffic. Alpha-Halbhydrat for levelling all kinds of screed and concrete subfloors, gypsum-based floor boards such as Fermacel, Knauf. Ideal for less stable subfloors. Applicable 2 up to 10 mm. To prepare subfloor for subsequent installation works. Applicable with spike roller and notched trowel. Suitable on underfloor heating systems.

For indoor use only.

**GISCODE CP 1**

**Gypsum-based self levelling compound**  
- up to 10 mm  
- very low-tension setting



**Unit size:** 25 kg  
**Shipping unit:** 42/pallet  
**Consumption:** approx. 1,5 kg/m<sup>2</sup>/mm  
**Accessibility:** 3 - 4 hrs.  
**Ready for laying:** at 3 mm thickness, approx. 24 hrs.

### 940 EUROPLAN QUICK

Spatula applicable, rapidly setting and high load bearing, cement-based repairing compound for filling and levelling of subfloor irregularities and holes, reparation of stairs, subfloor height compensation, ramping, mold edges, slopes, etc. Filling compound consistency and texture can be adjusted. For subsequent leveling works it needs to be primed with **044** or **050**. Can be mixed and extended with quartz sand **846 Europlan Sand** up to 30 %. Suitable on underfloor heating systems. Applicable up to 50 mm layer thickness.

For indoor use only.

Very low VOC emission.

**EMICODE EC 1 R Plus, GISCODE ZP 1, Blue Angel Label** (high standard certified, environmentally friendly product) UZ 113

**Cement-based filling and repairing compound**



**Unit size:** 25 kg  
**Shipping unit:** 42/pallet  
**Consumption:** approx. 1,5 kg/m<sup>2</sup>/mm  
**Readiness for further works:** after cooling down and hardening  
**Processing time:** approx. 15 min.



### 960 EUROPLAN SUPER

High quality, multi-purpose, cement-based, self-levelling compound, curing with low tension and excellent final strength for highest traffic use. For levelling of cement-based subfloors such as screed. Applicable up to 20 mm, mastic asphalt up to 5 mm layer thickness. To prepare subfloor for subsequent installation works. Can also be used to create a cementitious top-floor in contemporary concrete look. Surface sprinkling with colored acrylic flakes is possible. Final varnishing with recommended Eurocol floor-protecting lacquer is needed. Pumpable or applicable with spike roller and notched trowel. Can be extended with up to 30 % of quartz sand **846 Europlan Sand**. Suitable over underfloor heating systems.

For indoor use only.

Very low VOC emission.

**EMICODE EC 1 R, GISCODE ZP 1**

CE marking according to DIN EN 13813: CT-C35-F10

**High-end self levelling compound and top floor in concrete look**  
- up to 20 mm



**Unit size:** 25 kg  
**Shipping unit:** 42/pallet  
**Consumption:** approx. 1,5 kg/m<sup>2</sup>/mm  
**Accessibility:** 1 - 2 hrs.  
**Ready for laying:** at 3 mm thickness, approx. 24 hrs.





## SMOOTHING AND LEVELLING COMPOUNDS

### 965 EUROPLAN FLEX

High quality, fiber-reinforced, multi-purpose, cement-based, self levelling compound, curing with very low tension and excellent final strength for highest traffic use. For levelling cement-based subfloors (screed). Ideal for levelling of deformable subfloors like screwed down wooden boards or composites according to Eurocol instruction. Applicable from 3 mm up to 15 mm, mastic asphalt up to 5 mm layer thickness. To prepare subfloor for subsequent installation works. Applicable with flat trowel/spike roller. Suitable for underfloor heating systems and castor wheel resistant according to DIN EN 12529. For indoor use only. Very low VOC emission.

**EMICODE EC 1 R, GISCODE ZP 1**

**Self levelling compound**  
- layer thickness from 3 to 15 mm



**Unit size:** 25 kg  
**Shipping unit:** 42/pallet  
**Consumption:**  
approx. 5 kg/m<sup>2</sup>/3 mm  
**Accessibility:** 1-2 hrs.  
**Ready for further works:**  
at 3 mm thickness,  
approx. 24 hrs.



### 969 EUROPLAN RENO

High quality, multi-purpose, cement-based, self levelling compound, curing with very low tension and with excellent final strength for highest traffic use. For levelling of cement-based subfloors (screed). Also for levelling of stone floors and ceramic tiles; for application on waterproof adhesive residues according to the data sheet. Applicable up to 20 mm, mastic asphalt up to 5 mm layer thickness. On non-absorbent subfloors (e.g. stone floors, ceramic tiles) it can be used without primer (direct levelling). To prepare subfloor for subsequent installation works. Pumpable or applicable with spike roller and notched trowel. Can also be used to create a cementitious top-floor in contemporary concrete look. Surface sprinkling with colored acrylic flakes is possible. Final varnishing with recommended Eurocol floor-protecting lacquer is needed. For indoor use only. Very low VOC emission.

**EMICODE EC 1 R Plus, GISCODE ZP 1, Blue Angel Label** (high standard certified, environmentally friendly product) UZ 113  
CE marking according to DIN EN 13813: CT-C35-F10

**Self levelling compound and top-floor in concrete look**  
- ideal under parquet  
- usually direct levelling without primer  
- layer thickness from 2 to 20 mm



**Unit size:** 25 kg  
**Shipping unit:** 42/pallet  
**Consumption:** approx.  
1,5 kg/m<sup>2</sup>/mm  
**Accessibility:** approx. 1-2 hrs.  
**Ready for further works:**  
3 mm thickness, approx. 24 hrs.



### 971 EUROPLAN DE RAPID

Very high-quality, cement-based self-levelling, quickly drying screed, curing with low tension. Applicable from 5 mm to 40 mm layer thickness. To prepare subfloors like existing screed, concrete, ceramic tiles, stone floors, terrazzo for subsequent installation works. Especially needed when the subfloor has to be quickly ready for installation. Pumpable. Suitable for underfloor heating systems and castor wheel resistant according to DIN EN 12529. Indoor use and outdoor use (roof-covered areas only).

**EMICODE EC 1 R Plus, GISCODE ZP 1**

**Quick drying screed**  
- Ready mixture without sand  
- fast laying  
- layer thickness from 5 to 40 mm



**Unit size:** 25 kg  
**Shipping unit:** 42/pallet  
**Consumption:** approx.  
1,7 kg/m<sup>2</sup>/mm  
**Accessibility:** approx. 2-3 hrs.  
**Ready for further works:**  
1-4 days



### 977 EUROPLAN PRO

Very high quality, multi-purpose, cement-based, excellent self-levelling compound, curing with very low tension and good final strength for high traffic use. For levelling cement-based subfloors (screed). Applicable up to 10 mm, mastic asphalt up to 5 mm layer thickness. Pumpable and applicable with spike roller and notched trowel. To prepare the subfloor for subsequent installation works on elastic and parquet floor covering. Suitable over underfloor heating systems and castor wheel resistant according to DIN EN 12529. For indoor use only. Very low VOC emission.

**EMICODE EC 1 R Plus, GISCODE ZP 1, Blue Angel Label** (high standard certified, environmentally friendly product) UZ 113  
CE marking according to DIN EN 13813: CT-C25-F6

**Self levelling compound**  
- ideal under parquet  
- excellent self-levelling  
- layer thickness from 1 to 10 mm



**Unit size:** 25 kg  
**Shipping unit:** 42/pallet  
**Consumption:**  
approx. 1,5 kg/m<sup>2</sup>/mm  
**Accessibility:** approx. 2-3 hrs.  
**Ready for further works:**  
with 3 mm thickness,  
approx. 24 hrs.



## SMOOTHING AND LEVELLING COMPOUNDS

### 991 EUROPLAN DIRECT RAPID

Fast curing, multi-purpose, cement-based, self levelling compound, curing with very low tension and with excellent final strength for highest traffic use. For levelling cement-based subfloors (screed). Also usable for levelling of stone floors and ceramic tiles, for application on waterproof adhesive residues according to the data sheet. Applicable up to 20 mm, mastic asphalt up to 5 mm layer thickness. On non-absorbent subfloors (e.g. stone floors, ceramic tiles) it can be used without primer. Installation of floor covering can be done approx. 1,5-3 hrs. after finishing levelling works depending on layer thickness. To prepare the subfloor for subsequent installation works on elastic and parquet floor covering. For indoor use only. Very low VOC emission.

**EMICODE EC 1 R Plus, GISCODE ZP 1, Blue Angel Label** (high standard certified, environmentally friendly product) UZ 113  
CE marking according to DIN EN 13813: CT-C40-F10

**Fast drying self-levelling compound**  
- laying after 1,5 - 3 hrs (for PVC/CV and textile flooring)  
- layer thickness up to 20 mm  
- usually direct levelling without primer  
- dust-reduced product



**Unit size:** 23 kg  
**Shipping unit:** 42/pallet  
**Consumption:**  
approx. 1,5 kg/m<sup>2</sup>/mm  
**Accessibility:** approx. 2-3 hrs.  
**Ready for further works:**  
with 3 mm thickness,  
approx. 1,5-3 hrs.



### 999 EUROPLAN UNIFILL

Cement-based, self-levelling compound, curing with low tension and with good final strength for medium high traffic use. For levelling cement-based subfloors (screed). Applicable up to 5 mm in one operation. To prepare subfloor for further installation works. Suitable over underfloor heating systems and castor wheel resistant according to DIN EN 12529. For indoor use only. Very low VOC emission.

**EMICODE EC 1 R Plus, GISCODE ZP 1**  
CE marking according to DIN EN 13813: CT-C30-F6

**Self levelling compound**  
- layer thickness up to 5 mm



**Unit size:** 25 kg  
**Shipping unit:** 42/pallet  
**Consumption:**  
approx. 1,5 kg/m<sup>2</sup>/mm  
**Accessibility:** 2-3 hrs.  
**Ready for further works:**  
with 3 mm thickness,  
approx. 24 hrs.



the strong connection



# ADHESIVES FOR STRONG CONNECTIONS

## ADHESIVES FOR PVC AND/OR RUBBER FLOOR COVERINGS

### 140 EUROMIX PU PRO

Highly durable, water- and solvent-free, two-component, PU-based adhesive for installation of floor coverings in high traffic areas. Suitable for vinyl tiles, vinyl tiles made of recycled materials, rubber tiles with sanded backing. Applicable on all types of subfloors such as cement-based (screed), cleaned metal sheets, mastic asphalt and wooden composite boards. Suitable over underfloor heating systems and castor wheel resistant according to DIN EN 12529.

For indoor use and for outdoor use only on permanently dry subfloors. In case of residual moisture to be applied with Eurocol moisture blocking primer.

Very low VOC emission.

**EMICODE EC 1 R Plus, GISCODE RU 1**

**Two-component PU-based universal adhesive**  
- for high traffic flooring installation  
- **PVC, vinyl, rubber**



**Unit size:** 6,7 kg combi (A+B), 13,4 kg combi (A+B)

**Shipping unit:**

60/pallet (6,7 kg)

48/pallet (13,4 kg)

**Consumption:** 450-650 g/m<sup>2</sup> notched trowel A1-A2

**Processing time:** up to approx. 90 min.



### 522 EUROSAFE TACK

Provides very high initial tack, strong, dispersion-based adhesive for wet-set, one-side-pressure sensitive and contact bonding of vinyl-, CV-floor coverings in sheets, insulation mats on standard absorbent subfloors (wet-set bonding) and on non-absorbent subfloors like old vinyl floor coverings (one-side-pressure sensitive bonding) in combination with **900 Europlan DSP** as membrane for migration of plasticizers out of old floors. Can also be used for wall covering installation.

Can be used as contact adhesive (e.g. for heavy wall coverings, impact wall coverings in sports facilities). Can be thermally activated after drying. Suitable over underfloor heating systems and castor wheel resistant according to DIN EN 12529.

For indoor use only.

**GISCODE D 1**



For wintertime shipments, frost-resistant equivalent:

**578 Eurosafe Polaris Uni**

**One-sided pressure sensitive adhesive**

- for installation of floor-, wall-coverings and ceiling  
- wet set and one-side pressure sensitive adhesive  
- thermally activated bonding, contact adhesive  
- **PVC, vinyl**



**Unit size:** 13 kg

**Shipping unit:** 44/pallet

**Consumption/Application:** 250-300 g/m<sup>2</sup> notched trowel A1-A2

**Installation time:** up to approx. 90 min.

### 528 EUROSTAR ALLROUND

High-quality, dispersion-based, wet-set adhesive with very good initial adhesion power for installation of vinyl design floor coverings, LVTs, homogeneous and heterogeneous vinyl and CV-floor coverings in sheets and tiles, textile floor coverings with different backings, standard needle felt floor coverings on standard absorbent subfloors. Suitable over underfloor heating systems and castor wheel resistant according to DIN EN 12529. Shampoo resistant according to RAL 991 A2.

For indoor use only.

Very low VOC emission.

**EMICODE EC 1, GISCODE D 1**

**Universal adhesive**

- wet-set bonding adhesive with extended installation time  
- **PVC, vinyl**



**Unit size:** 13 kg

**Shipping unit:** 44/pallet

**Consumption:** 250-300 g/m<sup>2</sup> notched trowel A1-A2 (Vinyl/CV), 450-550 g/m<sup>2</sup> notched trowel B1-B2 (textile floor coverings)

**Installation time:** up to approx. 40 min.



### 622 EUROSTAR TACK

High quality, strong, dispersion-based adhesive for wet-set, one-side pressure sensitive and contact installation of vinyl-, CV- floor coverings in sheets and tiles, insulation mats on standard absorbent subfloors (wet-set bonding) and on non-absorbent subfloors (one-side-pressure sensitive bonding). Can also be used for textile floor coverings, needle felt and wall covering installation. Can be used as contact adhesive (e.g. for heavy wall coverings, impact wall coverings in sports facilities, installation of floor coverings on stair steps). Can be thermally reactivated after drying. Suitable over underfloor heating systems and castor wheel resistant according to DIN EN 12529. Shampoo resistant according to RAL 991 A2.

For indoor use only.

Very low VOC emission.

**EMICODE EC 1 Plus, GISCODE D 1**

**One-sided pressure sensitive adhesive**

- for installation of floor-, wall-coverings and ceiling  
- wet-set and one-side pressure sensitive adhesive  
- thermally reactive bonding  
- **PVC, vinyl**



**Unit size:** 13 kg

**Shipping unit:** 44/pallet

**Consumption/Application:** 250-300 g/m<sup>2</sup> notched trowel A1-A2

**Installation time:** up to approx. 60 min.





## ADHESIVES FOR PVC AND/OR RUBBER FLOOR COVERINGS

### 628 EUROSTAR RAPID

High quality, fiber-reinforced, strong, dispersion-based adhesive for wet-set installation, immediate bonding power with very high initial strength. Ideal for the installation of vinyl-, CV- floor coverings in sheets and tiles, for rubber floor coverings in sheets and tiles with sanded backing (e.g. Noraplan) as well as in tiles up to 1 m x 1 m up to 4 mm (e.g. Norament). Immediate bonding power prevents installation related tiles getting out of place. Recommended for LVT's installation on absorbent subfloors. Suitable over underfloor heating systems, castor wheel resistant according to DIN EN 12529.

For indoor use only.

Very low VOC emission.

**EMICODE EC 1 Plus, GISCODE D 1, Blue Angel Label** (high standard certified, environmentally friendly product) UZ 113

**Fast- and wet-adhesive**

- fiber-reinforced
- Prevents slipping of materials when laying
- immediate bonding
- **PVC, vinyl, rubber**



**Unit size:** 12 kg

**Shipping unit:** 44/pallet

**Consumption/Application:** approx. 250 g/m<sup>2</sup> notched trowel A2

**Installation time:** up to approx. 20 min.



### 640 EUROSTAR UNICOL

High quality, strong, dispersion-based adhesive with multiple application properties for wet-set installation of rubber floor coverings in sheets with sanded backing (e.g. Noraplan) as well as in tiles up to 1 m x 1 m, up to 4 mm thickness (e.g. Norament), for vinyl-, CV- floor coverings in sheets and tiles, vinyl composite floor coverings, textile floor coverings with different backings, LVTs, needle felt, linoleum in sheets on standard absorbent subfloors. Suitable over underfloor heating systems and castor wheel resistant according to DIN EN 12529. Shampoo resistant according to RAL 991 A2.

For indoor use only.

Very low VOC emission.

**EMICODE EC 1 Plus, GISCODE D 1**

**All-in-one universal adhesive**

- **PVC, vinyl, rubber**
- wet-set adhesive with strong bonding



**Unit size:** 13 kg

**Shipping unit:** 44/Pallet

**Consumption/Application:** 200-300 g/m<sup>2</sup> notched trowel A1-A2 (vinyl/CV/rubber)

450-550 g/m<sup>2</sup> notched trowel B1-B2 (textile floorings/linoleum)

**Installation time:** up to approx. 30 min.



### 643 EUROSTAR FIBRE

High quality, fiber-reinforced, strong, dispersion-based adhesive forming a hard adhesive ridge with multiple application properties for wet-set installation of rubber floor coverings in sheets with sanded backing (e.g. Noraplan) as well as in tiles up to 1 m x 1 m, up to 4 mm thickness (e.g. Norament), for LVTs, vinyl- and CV- floor coverings in sheets and tiles, vinyl composite floor coverings, textile floor coverings with different backings, needle felt, linoleum in sheets and in tiles (e.g. Modular) on standard absorbent subfloors. Suitable over underfloor heating systems and castor wheel resistant according to DIN EN 12529. For indoor use only.

Very low VOC emission.

**EMICODE EC 1 Plus, GISCODE D 1, Blue Angel Label** (high standard certified, environmentally friendly product) UZ 113

**All-in-one universal fiber-reinforced adhesive**

- strong bonding
- **PVC, vinyl, rubber**



**Unit size:** 13 kg

**Shipping unit:** 44/pallet

**Consumption/Application:** 200-300 g/m<sup>2</sup> notched trowel A1-A2 (vinyl/CV/rubber)

450-550 g/m<sup>2</sup> notched trowel B1-B2 (textile floorings/linoleum)

**Installation time:** up to approx. 30 min.



## ADHESIVES FOR TEXTILE FLOOR COVERINGS

### 501 EUROSTAR TEX PRO

Wet-set adhesive for bonding of carpet floorings with different backing types and light needle felt floorings, on standard absorbent subfloors. Suitable over underfloor heating systems and castor wheel resistant according to DIN EN 12529.

For indoor use only.

Very low VOC emission.

**EMICODE EC 1 Plus, GISCODE D 1**

**Carpet adhesive**

- wet-set adhesive



**Unit size:** 14 kg

**Shipping unit:** 44/pallet

**Consumption:** 450-550 g/m<sup>2</sup> notched trowel B1-B2

**Installation time:** up to approx. 20 min.



### 509 EUROSTAR TEX

High quality, strong, dispersion-based adhesive with high initial bonding strength and enhanced open time for wet-set installation of textile floor coverings with different backings, needle felt floor coverings, on standard absorbent subfloors. Can also be used for bonding of vinyl composite floorings. Suitable over underfloor heating systems and castor wheel resistant according to DIN EN 12529. Shampoo resistant according to RAL 991 A2.

For indoor use only.

Very low VOC emission.

**EMICODE EC 1 Plus, GISCODE D 1**

**Textile adhesive**

- wet-set adhesive with extended installation time
- high dimension stability
- very good for standard needle felt floor covering



**Unit size:** 13 kg, 20 kg

**Shipping unit:** 44/pallet (13 kg), 32/pallet (20 kg)

**Consumption:** 450-490 g/m<sup>2</sup>

**Application:** notched trowel B1-B2

**Installation time:** up to approx. 30 min.



## ADHESIVES FOR LINOLEUM

### 610 EUROSTAR LINO

Dispersion-based adhesive with high initial bonding strength and enhanced open time, for wet-set installation of linoleum in sheets and corkment underlay on standard absorbent subfloors. Suitable over underfloor heating systems and castor wheel resistant according to DIN EN 12529.

For indoor use only.

Very low VOC emission.

**EMICODE EC 1 Plus, GISCODE D 1**



For wintertime shipments, frost-resistant equivalent:

**418 Euroflex Lino Polaris**

**Linoleum adhesive**

- wet adhesive



**Unit size:** 13 kg

**Shipping unit:** 44/pallet

**Consumption:** 390-450 g/m<sup>2</sup> notched trowel B1

**Installation time:** up to approx. 15 min.



### 611 EUROSTAR LINO PLUS

High quality, strong, resin-free, dispersion-based adhesive with high initial bonding strength and enhanced open time for wet-set installation of linoleum in sheets and tiles, cork, sisal, needle felt and textile floor coverings with different backings, woven carpets, vinyl composite floor coverings on standard absorbent subfloors. Up to 25 % lower adhesive consumption than market standard products. Suitable over underfloor heating systems and castor wheel resistant according to DIN EN 12529. Shampoo resistant according to RAL 991 A2.

For indoor use only.

Very low VOC emission.

**EMICODE EC 1, GISCODE D 1, Blue Angel Label** (high standard certified, environmentally friendly product) UZ 113

**Linoleum and carpet adhesive**

- 25 % less consumption
- reduced water content
- fast curing after laying
- also on low absorbent elastic underlays



**Unit size:** 11 kg

**Shipping unit:** 44/pallet

**Consumption:** 260-300 g/m<sup>2</sup> notched trowel B1

**Application:** notched trowel B1

**Installation time:** up to approx. 20 min., depending on flooring

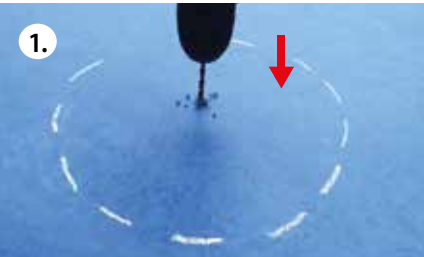


# ADHESIVES FOR LINOLEUM

## 520 LINOLEUM DOCTOR

Pressure sensitive renovation adhesive to repair hollow areas under linoleum. Hardens fast after rubbing down the injected adhesive under the floor covering.

**Repair kit:**  
1 bottle Linoleum Doctor 0.5 l  
2 syringes with injection needles  
1 operating instruction



1. Drill a hole of 4 mm diameter in the middle of the bubble.



2. Inject a small amount of Eurocol Linoleum Doctor into the bubble. During injection, move the syringe circularly around the drill hole.



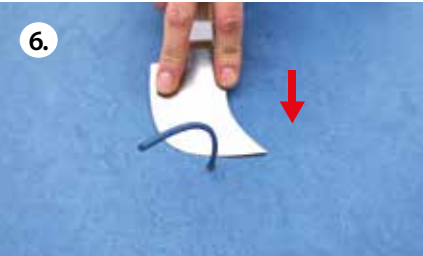
3. Use a hammer to slightly knock onto the floor covering. Afterwards knock onto the floor covering in the opposite direction.



4. Excessive adhesive is easily to be removed with an absorbent cloth. Eurocol Linoleum Doctor is solvent-free, water-soluble, gentle to the skin and absolutely harmless to the floor covering.



5. Once again, rub the floor covering down on the whole bubble forcefully with a hammer.



6. Warm a piece of linoleum welding rod in matching colour. Put it into the drill hole, cut the excessive welding rod.

# FIXING AGENTS/TACKIFIERS

## 541 EUROFIX ANTI SLIP

Rollable bonding dispersion which provides full area anti-slip coat after drying. For fixation and for multiple, removable installation of heavy, self-laying, form stable carpet tiles with bitumen-/vinyl- or PU-heavy coating, recommended for loose lay LVTs on standard absorbent or non-absorbent subfloors. For electrically conductive (EC) installation mix 10 parts of **541 Eurofix Anti-Slip** with 3,5 parts of **841 Europrimer EC**. Suitable over underfloor heating systems and castor wheel resistant according to DIN EN 12529. Shampoo resistant according to RAL 991 A2. For indoor use only. Very low VOC emission.

**EMICODE EC 1, GISCODE D 1**

**Anti-slip Tackifier**  
- also suitable for electrically conductive application



**Unit size:** 10 kg  
**Shipping unit:** 44/pallet  
**Consumption:** 100 - 150 g/m<sup>2</sup>  
**Application:** micro-fibre roller  
**Airing time:** approx. 60 min. until transparency



## 542 EUROFIX TILES

High quality, rollable, after drying permanently self-adhesive coating. For full-area fixation and for multiple, removable installation of form-stable textile- and vinyl-tiles with different backings. Also for removable installation of textile- and vinyl- floor coverings in sheets. Recommended for loose lay Luxury Vinyl Tiles (LVTs), for textile Light Weight Tiles which are not easy to install on standard absorbent and non-absorbent subfloors. Also for removable installation of vinyl- and textile- floor coverings in sheets on underlays. For indoor use only. Very low VOC emission.

**EMICODE EC 1 Plus, GISCODE D 1**

**Tackifier for textile and vinyl tiles**  
- universal



**Unit size:** 10 kg  
**Shipping unit:** 44/pallet  
**Consumption:** 100 - 120 g/m<sup>2</sup>  
**Application:** micro-fibre roller or notched trowel A1  
**Airing time before installation:** approx. 20 - 40 min. until transparency



# FIXING AGENTS/TACKIFIERS

## 546 EUROFIX TACKIFIER

High quality, rollable, after drying permanently self-adhesive coating. For full area fixation of vinyl, CV-floor coverings in sheets and tiles and textile floor coverings (also with felt backing) on absorbent and non-absorbent (also existing, cleaned, full- area glued down floor coverings) subfloors. Ideal for private use in do-it-yourself application when easy floor covering removal (e.g. for renovation) is required. Note: **891 Euroclean** added to mopping water makes removal of residues from **546** easier. Ideal for private living areas and rented apartments. Suitable for fixing over underfloor heating systems and with textile floorings. It is shampoo resistant according to RAL 991 A2. For indoor use only. Very low VOC emission.

**EMICODE EC 1 Plus, GISCODE D 1**

**Universal tackifier**  
- easy removable  
- can be re-emulsified



**Unit size:** 1,6 kg, 3 kg, 5 kg, 13 kg  
**Shipping unit:** 225/pallet (1,6 kg), 120/pallet (3 kg), 90/pallet (5 kg), 40/pallet (13 kg)  
**Consumption:** 100 - 130 g/m<sup>2</sup>  
**Application:** micro-fiber roller  
**Airing time before installation:** 30 - 60 min.



# ELECTRICALLY CONDUCTIVE SYSTEMS

## 041 EUROPRIMER EC

Ready to use, dispersion-based primer for installation of electrically conductive floor coverings on absorbent standard subfloors according to floor covering manufacturer's instructions. In combination with **801 Eurostrip EC** copper tape net improves transverse conductivity. Pay attention to floor covering manufacture's installation instruction! Suitable over underfloor heating systems. For indoor use only. Very low VOC emission.

**EMICODE EC 1, GISCODE D 1**

**Conductive dispersion primer**



**Unit size:** 10 kg  
**Shipping unit:** 60/pallet  
**Consumption:** 100 - 150 g/m<sup>2</sup>  
**Application:** roller  
**Drying time:** approx. 30 min.



## 506 EUROSTAR TEX EC

Dispersion-based, carbon-fiber containing adhesive with high initial bonding strength in combination with **041 Europrimer EC** and/or Copper Tape **801 Eurostrip EC** net for electrically conductive installation of floor coverings according to floor covering manufacturer's instructions. Is recommended for electrically conductive installation of textile floor coverings, linoleum, needle felt onto absorbent subfloors prepared for the electrically conductive installation. Suitable over underfloor heating systems and castor wheel resistant according to DIN EN 12529. Shampoo resistant according to RAL 991 A2. For indoor use only. Very low VOC emission.

**EMICODE EC 1 Plus, GISCODE D 1**

**Conductive carpet and linoleum adhesive**



**Unit size:** 13 kg  
**Shipping unit:** 44/pallet  
**Consumption:** approx. 450 g/m<sup>2</sup>  
**Application:** notched trowel S2  
**Installation time:** 5 - 10 min.



## 523 EUROSTAR TACK EC

Very high-quality, light-coloured, conductive wet-set adhesive, very fast applicable, very high final strength. To be applied on electrically conductive PVC and textiles on standard absorbent subfloors which have been previously primed with **041 Europrimer EC** and/or equipped with **801 Eurostrip EC** copper tape. Suitable over underfloor heating systems and is castor wheel resistant according to DIN EN 12529 requirements as well as shampoo resistant according to RAL 991A2. For indoor use only. Very low VOC emission.

**EMICODE EC 1 Plus, GISCODE D 1.** Emission-tested product according to DIBT principles.

**Conductive tackifier for PVC and textile**



**Unit size:** 12 kg  
**Shipping unit:** 44/Palette  
**Consumption:** approx. 250 - 400 g/m<sup>2</sup>  
**Application:** notched trowel S1/S2  
**Installation time:** 10 - 15 min.



# ELECTRICALLY CONDUCTIVE SYSTEMS

## 541 EUROFIX ANTI SLIP EC

Rollable bonding dispersion which provides full area anti-slip coating after drying. For fixation and for multiple, removable installation of heavy, self-laying, form stable carpet tiles with bitumen-/vinyl- or PU-heavy coating, recommended for loose lay LVTs on standard absorbent or non-absorbent subfloors. For electrically conductive (EC) installation mix 10 parts of **541 Eurofix Anti-Slip EC** with 3,5 parts of **841 Europrimer EC**.

For indoor use only.

Very low VOC emission.

**EMICODE EC 1, GISCODE D 1**



For wintertime shipments, frost-resistant equivalent:  
**578 Eurosafe Polaris Uni**

### Anti-slip Tackifier



**Unit size:** 10 kg  
**Shipping unit:** 44/ pallet  
**Consumption:** 100 - 150 g/m²  
**Application:** micro-fibre roller  
**Installation time:** approx 60 min. until transparency



## 641 EUROSTAR SPECIAL EC

Self-adhesive Copper Tape for electrically conductive preparation of standard subfloors before installation of electrically conductive floor coverings according to floor covering manufacturer's instructions. Copper tape has to be installed in individually discharged stripe on **041 Europrimer EC** or as copper tape net linking to ground connection. Ensures transverse potential equalization according to existing standards. Suitable over underfloor heating systems and castor wheel resistant according to DIN EN 12529 as well as shampoo resistant according to RAL 991 A2.

For indoor use only.

Very low VOC emission certified.

**EMICODE EC 1 Plus, GISCODE D 1**

On elastomer coverings to be applied on **801 Eurostrip EC** without **041 Europrimer EC**.

**Universal adhesive, conductive**  
- Elastomer  
- PVC  
- Linoleum  
- textile



**Unit size:** 12 kg  
**Shipping unit:** 44/Pallet  
**Consumption:** 260 - 400 g/m²  
**Application:** notched trowel S1 - S2  
**Installation time:** up to approx. 20 min., depending on floor covering.



## 801 EUROSTRIP EC

Self-adhesive copper tape for electrically conductive preparation of standard subfloor before installation of electrically conductive floor covering according to floor covering manufacturer's instructions. Ensures transverse potential equalization according to existing standards.

### Self-adhesive copper tape



**Roll length:** 20 m  
**Shipping unit:** 30 rolls/carton  
**Application:** self-adhesive

# CONTACT- AND MOUNTING ADHESIVES

## 232 EUROSOL MONTAGE

Elastically curing mounting adhesive, allows materials to be positioned for accurate alignment especially for installation of wooden or hard-vinyl skirting boards. Also used for joint sealing and installation of chip-and gypsum-boards, gypsum plasterboards, insulation and acoustic panels. For installation of construction boards, window seats made of plastic, natural stone or composite material. Excellent adhesion properties on concrete, wood materials, clean metal surfaces. Not for styropor. Hazardous material: Please check safety data sheet!

**GISCODE S 1**

**Mounting Adhesive**  
- fixing skirtings  
- joint filling glue  
- contains solvent



**Unit size:** 310 ml  
**Shipping unit:** 12/carton, 1440/pallet  
**Consumption:** 20 - 40 ml/rm  
**Application:** cartridge gun  
**Airing time:** up to 5 min.

## 233 EUROSOL CONTACT

Solvent-contained, thermally reactivable contact adhesive with very high initial contact bonding power for temperature resistant contact adhesion of a great variety of materials such as metal, glass, ceramic, plastics (ABS, PVC, Acrylic) wood, leather, hardboard, rubber etc. In floor covering installation for wooden skirting boards (rubber) stair nosings, groove profiles, floor covering. Also used for installation of homogenous vinyl, rubber, leather and cork floor coverings, linoleum according to floor covering manufacturer's instructions. Hazardous material: Please check safety data sheet!

**GISCODE S 1**

**Contact Adhesive**  
- very high immediate contact bonding power



**Unit size:** 0,650 kg, 2,5 kg, 5,5 kg, 10 kg  
**Shipping unit:** 8/carton (650 g), 200/pallet (2,5 kg), 70/pallet (5,5 kg), 42/pallet (10 kg)  
**Consumption:** 200 - 250 g/m² g/m²  
**Application:** notched trowel A1, spatula or brush  
**Airing time:** up to 5 - 10 min.  
**Contact bonding time:** approx. 2 hrs.

## 650 EUROSTAR FASTCOL

Dispersion-based, thermally reactivable contact adhesive with high initial contact bonding power and long contact adhesion time for contact mounting of vinyl, rubber, linoleum, textile floor coverings onto stairs, stair nosings, covering up profiles and floor covering panels. Also used for installation of homogenous vinyl, rubber, leather and cork floor coverings, linoleum according to floor covering manufacturer's instructions.

For indoor use only.

Very low VOC emission.

**EMICODE EC 1 Plus, GISCODE D 1**

**Dispersion-based contact adhesive**  
- very high contact bonding power  
- solvent free



**Unit size:** 7,5 kg  
**Shipping unit:** 60/pallet  
**Consumption:** 200 - 300 g/m²  
**Application:** with supplied roller  
**Airing time:** 30 - 120 min.  
**Contact bonding time:** approx. up to 4 hrs.





## SUPPLEMENTARIES FLOOR INSTALLATION

### CA ACTIVE BY EUROCOL

Instant adhesive for fast bonding of rubber components, metal, glass and plastic. Suitable for repairing works in case of installation failures. Hazardous material: Please consider security advices and please check safety data sheet!

**Cyanoacrylate adhesive/  
Instant adhesive**



**Unit size:** 50 g  
**Shipping unit:** 25/package  
**Application:** wet bonding, dropping bottle

### 803 EUROSTRIP TRANSFER

Fiber-reinforced, double-sided, dry-adhesive tape that combines extra strength with long-term durability. Strong floor-laying tape also for hard-wearing floor-coverings (carpet, vinyl). Also for accurate mounting of skirting boards made of wood, vinyl and rubber. Suitable for underfloor heating systems.

**Fiber-reinforced dry-adhesive tape**  
- floor laying  
- floor profile, skirting mounting



**Roll length:** 50 m  
**Roll width:** 35 mm, 45 mm, 90 mm  
**Shipping unit:** 32/carton (35 mm), 24/carton (45 mm), 12/carton (90 mm)  
**Application:** with applicator or by hand

### 815 EUROCLEAR HANDCLEAN

For general hand and tool cleaning. In particular for cleaning floor surfaces from unhardened silicone, PU-foam, PU-, Epoxy-, MS- construction related adhesive residues or sealing compounds.

**Cleaning tissues**



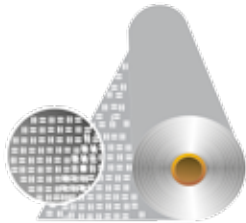
**Unit size:** 80 tissues (20 x 30 cm)/box  
**Shipping unit:** 6 boxes/carton

## UNDERLAY MATS

### 805 EUROFLOOR BASE

Underlay for decoupling of PVC-, CV-floorings, textile floorings from moist or mechanically unstable subfloors. Provides additional step-sound insulation and good adhesion to recommended Eurocol vinyl and textile floor covering adhesives. With 1,5 mm thickness low installation height is guaranteed. Indoor use. Fungistatic and biostatic against mould growth. Non-flammable according to Bfl-S1 DIN EN 13501-1.

**Decoupling underlay**  
- decoupling from moist and/or weak subfloors

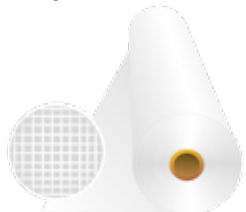


**Roll length:** 35 m  
**Roll width:** 2 m  
**Processing:** lay out loosely

### 810 EUROFLOOR FORCE FABRIC

Tear-resistant polyester fabric for subfloor surface reinforcement and load distribution. In particular for not sufficiently pressure resistant, unstable, deformable subfloors such as wooden boards, glued down insulation underlays, CV- floor coverings and point-elastic sports floors before levelling works.

**Reinforcement fabric**  
- for weak subfloors before levelling



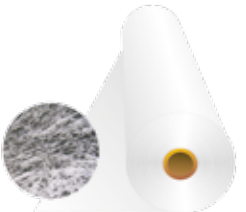
**Roll length:** 50 m  
**Roll width:** 1 m  
**Pallet size:** 40 rolls/pallet  
**Application:** gluing down, fixing or tacking

## UNDERLAY MATS

### 813 EUROFLOOR FORCE FIBRE

Special fiber-compound underlay used when levelling works are done on non-standard, weak subfloors. Laid out on the subfloor and covered with levelling compound the fibre-compound resolves and the fibres rise up and spread evenly within the levelling compound layer. For bridging cracks, load distribution and general subfloor stabilization. Minimum coating for levelling work: 5 mm. Use additionally spike roller for equalization.

**Reinforcing fabric**  
- bridging cracks  
- for weak subfloors



**Roll length:** 100 m  
**Roll width:** 0,6 m  
**Thickness:** 0,6 mm  
**Pallet size:** 18 rolls/pallet

### 820 EUROFLOOR COMFORT/ 821 EUROFLOOR COMFORT PRO

PU-cork granulate based, elastic underlay to improve step-sound insulation and/or for height adjustments in subfloor constructions in new and old buildings. Step sound improvement degree according to DIN 52210 certified with 2 mm vinyl floor covering: approx. 20 dB. with 5 mm thick mat. **821 Eurofloor Comfort Pro** - same as **820** but in addition certified as Bfl/S1 in accordance with German standard DIN EN 13501-1. Very low VOC emission.  
**EMICODE EC 1**

**Step-sound absorbing underlay mat**  
- for floor coverings and parquet



**Thickness/length/width:**  
**820 Eurofloor comfort:** 3 mm x 30 lm x 1 m  
5 mm x 24 lm x 1 m  
**821 Eurofloor Comfort Pro:** 3 mm x 30 lm x 1 m  
**Pallet size:** 6 rolls/pallet (2 mm, 3 mm, 5 mm)  
**Application:** gluing down on full area by Eurocol **622 Eurostar Tack**

### 823 EUROFLOOR RENO

Polyester fiber plate, which has to be full-area glued down with recommended reactive Eurocol adhesives on suitable subfloors to decouple the floor covering construction from weak subfloors. Can also be used for height adjustments without using levelling compounds before installation of parquet, ceramic tiles and different floor coverings. It significantly improves step sound insulation. For indoor use only. Very low VOC emission.  
**EMICODE EC 1 Plus**

**Base and decoupling plate**  
- can be levelled before installation of resilient floor coverings

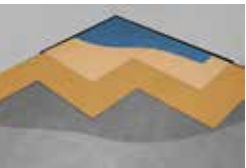


**Plate size:** 4 mm x 9 m<sup>2</sup>/carton (100 x 60 cm)  
9 mm 6 m<sup>2</sup>/carton (100 x 60 cm)  
15 mm 3 m<sup>2</sup>/carton (100 x 60 cm)  
**Shipping unit:** 4 mm 15 plates/carton  
9 mm 10 plates/carton  
15 mm 5 plates/carton

### JUMPAX HD BY EUROCOL

Two-layer MDF underlay board system with foam base, loosely laid on suitable subfloors or existing floors to decouple them from existing floor covering constructions (floating installation). It is ideal for temporary floor covering installations if the floor covering needs to be fitted and removed without harming existing floors (fairs, apartments, offices). Wooden floors, multilayer parquet, textile and resilient floor coverings, can be glued down on the full area with suitable adhesives. Step sound improvement degree up to 22 dB. Can be used on under-floor heating systems. Certified as Bfl/S1 flame retardant according to German standard DIN EN 13501-1.

**Removable subfloor system for installation of floor coverings and multilayer parquet**

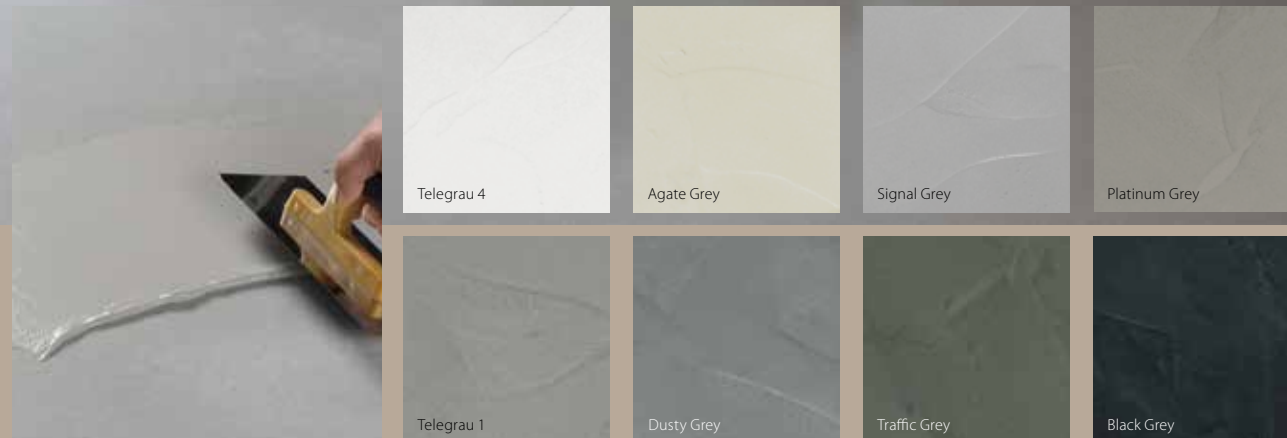


**Thickness:** 10 mm  
**Packet size:** 2,88 m<sup>2</sup> (120 x 600 cm)  
**Shipping unit:** 21 packets/pallet (60,48 m<sup>2</sup>/pallet)

the strong connection

# BETONDESIGN SURFACE

IN CONCRETE DESIGN



## BETONDESIGN

BETONDESIGN System is certified in accordance with **EMICODE EC 2**, slip-ristance: R10

### 305 BETONDESIGN

Ready to use, easy to apply, polymer dispersion-based compound for creating individually designed, unique, spatula-structured surfaces on floors and walls; single-colored (concrete design), multi-colored (marble design). Available in 8 different concrete colors. It requires a smooth, stable, even and crack-free subfloor. **910 Europlan PU Duo** provides a stable, even, crack over-bridging subfloor for **BetonDesign. 960 Europlan Super** provides a highly stable and durable, even subfloor for **BetonDesign**. For indoor use only. Total layer thickness only 1 - 1,5 mm.

#### Available colors:

3051 Telegrau 4, 3052 Agate Grey, 3053 Signal Grey, 3054 Platinum Grey, 3055 Telegrau 1, 3056 Dusty Grey, 3057 Traffic Grey, 3058 Black Grey

For initial and regular care of **BetonDesign** we recommend

**312 BetonDesign Conditioner.**

**Pasty finishing coat with decorative concrete look**



**Unit size:** 7 kg  
**Shipping unit:** 75/pallet (7 kg)  
**Consumption:** approx. 1 kg/m<sup>2</sup>/2 layers  
**Processing time:** approx. 40 min.  
**Hardening time:** 6-8 hrs.  
**Drying time for sealing:** can be lacquered min. in 12 hrs.

### 322 EUROFINISH C FLOOR DUO

Dispersion-based, high-end, two-component coat for the top coat of **BetonDesign** after subsequent priming of **311 Eurofinish Top Coat Duo**.

**322 Eurofinish C Floor** builds a scratch-resistant, high-elastic coat, step resistant, higher dirt resistant that subsequently reduces the cleaning costs of the coated area. Slip-resistant R9 according to BGR 181 is achieved through the product, R10 and R11 are achieved after the addition of seprate Eurocol anti-slip additives.

Available in high-matt.

For indoor use only. Very low VOC emission

**EMICODE EC 1 R Plus, GISCODE W 3/DD+**

Additional products: **871 Additive R 11/872 Additive R 10**

**Dispersion-based, 2C PU Top Coat Lacquer**  
- for long term protection in high traffic areas  
- resistant against chemicals  
- wear-resistant  
- extra matt



**Unit size:** 4,56 kg combi (A+B)  
**Shipping unit:** 60/pallet  
**Consumption:** approx. 100 ml/m<sup>2</sup>/mm  
**First careful walking:** after 24 hrs. (after lacquer application)  
**Final hardness:** approx. 7 days (after finishing coat has fully hardened)

### 910 EUROPLAN PU DUO

High End multi-purpose, self levelling top coat which can also be used under **BetonDesign** for smoothing subfloors, over-bridging existing subfloor cracks and/or preventing crack-formation and crack transfer into **BetonDesign** top coat (ConcreteDesign). Provides excellent bonding to **305 BetonDesign** after fine sanding of the surface.

**EMICODE EC 1R Plus, GISCODE RU 1**

**Two-component PU-based levelling compound**  
- self levelling  
- highly durable



**Unit size:** 4,86 kg combi (A+B), 9,72 kg combi (A+B)  
**Shipping unit:** 48/pallet (9,72 kg) 60/pallet (4,256 kg)  
**Consumption:** approx. 1,3 kg/m<sup>2</sup>/mm  
**Processing time:** approx. 40 min.  
**Hardening time:** 6-8 hrs.

### 969 EUROPLAN RENO

High quality, multi-purpose, cement-based, self levelling compound, curing with very low tension and with excellent final strength for highest traffic use. Ideal as top-coat levelling compound, with subsequent final varnishing with recommended Eurocol floor-protecting lacquer is needed. Surface sprinkling with colored acrylic flakes is possible into the wet, no yet set levelling compound, before application of transparent final varnishing. Suitable over underfloor heating systems and castor wheel resistant according to DIN EN 12529.

For indoor use only.

Very low VOC emission.

**EMICODE EC 1 R Plus, GISCODE ZP 1, Blauer Engel UZ 113**

**Self-levelling compound and top-coat in concrete look**  
- usually direct levelling without primer  
- can be used as top-coat  
- layer thickness from 2 to 20 mm.  
- very good levelling properties



**Unit size:** 25 kg  
**Shipping unit:** 42/pallet  
**Consumption:** 1,5 kg/m<sup>2</sup>/mm  
**Accessibility:** approx. 1-2 hrs.  
**Ready for further works:** 3 mm thickness, approx. 24 hrs.



eurocol



the strong connection



MULTITERRAZZO



LIQUIDDESIGN



FLUIDFLOOR

# eurocol surface finishing

## EUROCOL SURFACE FINISHING

### 370 MULTITERRAZZO

Seamless curing liquid floor of high durability, easy to maintain and water-resistant. The hard-curing floor covering is form-stable and suitable for the highest demands with regard to mechanical and chemical resistance. Available in a variety of colors.

Step and slip-resistant. Surface protection is achieved with **C** Floor Top Coat protection. Fulfills the anti-slip requirements R9, R10 and R11 according to BRG 181 through the Eurocol **C** Floor Top Coat protection. Fire resistant class Bfl S1.

Can be applied on prepared, even mineral subfloors. The product is suitable for underfloor heating systems and is castor wheel resistant in acc. with DIN EN 12529.

For indoor use only.  
**EMICODE EC 1 Plus**

**Two-component seamless liquid hard floor**  
- available in 10 different colour designs  
- domestic, industrial and public use



**Unit size:** upon request  
**Shipping unit:** upon request  
**Consumption:** 1 kg/m<sup>2</sup>  
**Application:** spatula  
**Processing time:** approx. 40 minutes  
**Drying time until lacquering:** approx. 12 hrs.



### 340 FLUIDFLOOR

Highly resistant, two-component, elastic, hard-wearing, very low-emission, light- and color- resistant liquid floor that hardens seamless. It is easy to maintain, water-resistant, dimensionally stable, scratch-resistant and highly elastic. The flooring is both for residential and industrial areas due to its castor wheel resistance. It can be applied in one color or with chip-design. Excellent physical and chemical resistance. Available in a variety of colors. The floor is characterized by high its impact sound absorption, walk and impact resistance, highly slip resistant and is hardly flammable.

Anti-slip classification R9, according to BRG 181 are achieved through application of Eurocol **C** Floor Top-Coat Protection, R10 and R11 after addition of additives. The product is suitable for underfloor heating and for use with castor wheel roller according to DIN EN 12529.

For indoor use only.  
With **C** Floor Top-Coat Protection

**Two-component seamless elastic liquid floor**  
- available in different colours  
- uni colored or flake design  
- industrial and public use



**Unit size:** upon request  
**Shipping unit:** upon request  
**Consumption:** 1 kg/m<sup>2</sup>  
**Application:** upon request  
**Processing time:** upon request  
**Drying time until lacquering:** upon request

### 350 LIQUIDDESIGN

Highly resistant, elastic, hard-wearing, very low-emission, light- and color-resistant liquid floor that combines excellent walking comfort and environmental friendliness with outstanding performance. The seamless cured flooring provides a comfortable walking and living comfort, is easy to maintain, abrasion and scratch resistant as well as resistant to a variety of chemicals. The flooring is made from natural, renewable products such as natural oils (linseed oil), wood flour, corn and colored pigments. It is available in a variety of colors. Extremely mechanical and chemical resistant through the Eurocol **C** Floor top-coat as well as anti-slip classification BRG 181, R 10 and R11 after addition of additives.

Fire resistant class Cfl S1.  
The product is suitable over underfloor heating and for use with castor wheel roller according to DIN EN 12529.  
For indoor use only.

**Two-component seamless elastic liquid floor with a based on natural raw materials like linseed oil and cork**  
- available in different colours  
- domestic and public use



**Unit size:** 10,75 kg + 4,25 kg (A+B)  
**Shipping unit:** upon request  
**Consumption:** 1 kg/m<sup>2</sup>  
**Application:** upon request  
**Processing time:** upon request  
**Drying time until lacquering:** upon request

### 835 EUROFINISH EPOXY DUO

Very high quality, colored, two-component epoxy floor paint, with high color opacity, which hardens high percentage cross-linking to a durable floor, permeable for groundwater vapour. Applied in two layers creates an excellent, abrasion and chemical and slip resistant floor surfaces in indoor and covered outdoor areas, which can be re-used quickly. Can be applied in work areas, industrial halls, garages and hobby rooms. It is possible to sprinkle Eurocol acrylic color flakes (for special decorative effect) into the wet top coat. The sprinkled coat has to be sealed with a suitable transparent Eurocol PU coat to protect color flakes from peeling up and collecting dirt. The Eurocol PU coat improves the scratch resistance and acts as a sacrificial layer. Suitable over underfloor heating systems. Shipped in silk-matt, pebble gray RAL 7032.

**GISCODE RE 1**

**Two-component epoxy top-coat**  
- pebble gray  
- chemical resistant  
- fast drying



**Unit size:** 10 kg + 2 kg (A+B),  
**Shipping unit:** 32/pallet  
**Consumption:** 200 - 300 g/m<sup>2</sup>  
**Application:** Eurocol micro-fibre roller  
**Drying time:** approx. 12-16 hrs.



the strong connection

# C FLOOR SYSTEM

STRIPPING AND RE-COATING OF  
WORN RESILIENT FLOOR COVERINGS

## C FLOOR

### 891 EUROCLEAN BASIC

Alkaline cleaner to be used when re-coating resilient floor coverings with C Floor System. When used in machine application anti-foaming agent **391 Euroclean** defoamer is recommended to be added to avoid unwanted foam formation.

**GISCODE GG 30**

#### Universal cleaner

- also suitable for linoleum



**Unit size:** 700 ml, 10 l

**Shipping unit:** 12/carton, 504/pallet (700 ml)2/carton, 54/pallet (10 l)

**Consumption:** depending on dirt

**Application:** wipe, cloth

**Exposure time:** at least 10 min.

### 321 EUROFINISH C FLOOR COLOR DUO

PU-based, 2-component colored coating with excellent color opacity for coating of new and re-coating of old, worn or badly maintained resilient floor coverings. Especially for those old floor coverings with stains and defects which are not remediable by transparent re-coating. Also for new or well-preserved floor coverings which are to be re-designed. It is possible to scatter color chips (for special chip design) onto the still wet top color coat. The color coat (with or without chip design) has to be sealed with Eurocol **322 Eurofinish C Floor Duo**, transparent C Floor coat.

**GISCODE W3/DD+**

#### Full area refreshment of old and new floor coverings

- highly wear resistant
- highly chemical resistant
- high cross linking ratio



**Unit size:** 10 l + 2,5 l hardener (A+B)

**Shipping unit:** 60/pallet

**Consumption:** approx.

120 ml/m<sup>2</sup>

**Application:** roller

**Drying time:** approx. 12 hrs.

### 322 EUROFINISH C FLOOR DUO

High-End, two-component, PU-based sealer for the long-term, chemical-, scratch-, and wear-resistant protection of new and old, worn or badly maintained resilient floor coverings. Ideal for re-coating of old or top-coating of new, smooth or structured floor coverings (vinyl, linoleum, rubber) which are exposed to very high mechanical and chemical wear. It reduces dirt adhesion and the time needed for day-to-day maintenance. Floor protection with high cross-linking ratio for highest possible floor protection against passing lanes, renaturation and staining caused by chemicals/disinfectants.

Meets all relevant norms for floor covering coatings.

Slip resistant R9, R10, R11 according BGR 181.

Very low VOC emission.

**EMICODE EC 1 R Plus, GISCODE W3+/DD1**

#### Top-coating or Re-coating for new or old resilient floor coverings

- highly wear resistant
- highly chemical resistant
- high, 4:1 cross linking ratio



**Unit size:** 10 l + 2,5 l hardener (A+B)

**Shipping unit:** 60/pallet

**Consumption:** approx.

100 - 120 ml/m<sup>2</sup>/mm

**Processing time:** approx. 4 hrs.

**Hardening time:** approx. 24 hrs.



### 328 EUROFINISH C FLOOR CARE

Hard-wearing, self-shiny, dirt repelling maintenance agent for initial and regular care of C Floor coated resilient floor coverings. Streak free drying, no polishing needed. Skin friendly since pH neutral. Has to be added to mopping water according to instructions. Removes efficiently firmly adhering dirt, heel marks and reduces risk of further marks.

**GISCODE GU 50**

#### Maintenance of C Floor finished resilient floor coverings



**Unit size:** 5 l

**Shipping unit:** 96/pallet

**Consumption:** added 40 ml

on 8 l mopping water

**Application:** wipe

**Drying time:** 0,5 hrs.



the strong connection

# CLEANING AND MAINTENANCE

## CLEANING AND MAINTENANCE

### 887 EUROCLEAN MULTI

Self-shiny, dirt repellent, polymer dispersion for initial and regular care of manually sealed parquet and cork floor coverings. Vinyl-, CV-floor coverings without special PU coating or UV sealed and linoleum. Dries to a slip-resistant protective coat which is also resistant to staining and foot-step marks. Streak free drying, no polishing needed. Skin friendly since pH-neutral. Can be added to mopping water for regular care.

**GISCODE GE 10**

**Universal parquet and floor care**  
- extra clean and care film



**Unit size:** 700 ml, 5 l  
**Shipping unit:** 12/carton, 504/pallet (700 ml) 4/carton, 96/pallet (5 l)  
**Consumption:** depending on application  
**Application:** wipe  
**Drying time:** approx. 1 hr.

### 888 EUROCLEAN UNI

Self-shiny, dirt repellent maintenance agent for professional initial and regular clean and care of all types of engineered and manually sealed floor coverings (wood floors, resilient floor coverings) in one step. Removes efficiently firmly adhering dirt, heel marks and reduces potential risk of further marks. Streak free drying, no polishing needed. Skin friendly since pH-neutral. Very economic consumption. Machine applicable. Has to be added to mopping water according to instructions.

**GISCODE GU 50**

**Universal base cleaner**  
- clean & care in one step  
- pH neutral, skin friendly



**Unit size:** 700 ml, 5 l  
**Shipping unit:** 12/carton, 504/pallet (700 ml) 4/carton, 96/pallet (5 l)  
**Consumption:** depending on dirt  
**Application:** wipe, cloth  
**Exposure time:** at least 30 min.

### 891 EUROCLEAN BASIC

Water-based alkaline-based cleaning agent for through basic cleaning of all sorts of alkali-resistant floors (alkaline resistance up to pH-value 9 is required). Can be used for removing old maintenance coatings, makes removal of adhesive and tackifire residues easier after floor covering removal. Base cleaner before floor covering refreshing with **898** Basic Protection and before floor covering recoating with **C** floor System. When used in machine application anti-foaming agent **391 Euroclean** defoamer is recommended.

Meets all relevant norms for floor covering coatings.

**GISCODE GG 30**

**Universal cleaner**  
-also suitable for Linoleum



**Unit size:** 700 ml, 10 l  
**Shipping unit:** 12/carton, 504/pallet (700 ml) 2/carton, 54/pallet (10 l)  
**Consumption:** depending on dirt  
**Application:** wipe, cloth  
**Exposure time:** at least 10 min.

### 893 EUROCLEAN LAMINAT

Self-shiny, dirt repellent cleaning and maintenance agent for initial and regular care. For cleaning of laminate, engineered multilayer parquet and click floor systems. Clean and care in one operation. Removes efficiently firmly adhering dirt, heel marks and reduces potential risk of further marks. Streak free drying, no polishing needed.

Skin friendly since pH-neutral. Has to be added to mopping water according to instruction.

**GISCODE GU 50**

**Laminate cleaner**  
- clean & care in one step  
- pH neutral, skin friendly  
- pleasant odor



**Unit size:** 700 ml  
**Shipping unit:** 12/carton, 504/pallet  
**Consumption:** depending on dirt  
**Application:** wipe  
**Drying time:** approx. 30 min.

### 898 EUROCLEAN LONGLIFE

Hard-wearing, self-shiny, dirt repelling maintenance agent for full area refreshment of worn floor coverings. Initial and regular care of manually sealed parquet, cork floor coverings, resilient floor coverings subject to manufacturer's instructions. Dries to a slip and stain resistant protective film. No polishing needed.

**GISCODE GU 10**

**Full area refreshment of old and new floor coverings**  
- resistant against footprints, dirt  
- easy to clean



**Unit size:** 700 ml, 10 l  
**Shipping unit:** 12/carton, 504/pallet (700 ml) 2/carton, 54/pallet (10 l)  
**Consumption:** 1 l/40 m<sup>2</sup>  
**Application:** wipe  
**Drying time:** 1 - 2 hrs.



the strong connection

# ARTIFICIAL TURF AND SPORT FLOORING SYSTEMS

## ARTIFICIAL TURF

### 149 EUROMIX TURF

Two-component, PU-based, green colored adhesive for gluing artificial turf along the seams on permitted polyester fleece tape (**849 Eurotape U, 842 Eurotape F, 843 Eurotape T**).  
Outdoor and indoor use.  
**GISCODE RU 1**

**Two-component PU-based artificial turf adhesive**



**Unit size:** 12 kg + 1,2 kg Hardener PU (A+B)  
**Shipping unit:** 44/pallet, hardener PU 12/carton  
**Consumption:** approx. 350 g/rm  
**Application:** notched trowel B3-B11  
**Installation time:** approx. 50 min.

### 160 EUROMIX TURF PRO

Two-component PU-based, green colored adhesive with very low consumption for gluing artificial turf along the seams on permitted polyester fleece tape (**849 Eurotape U, 842 Eurotape F, 843 Eurotape T**). Fast drying. Applicable also under extreme temperature conditions according to technical data sheet. Low consumption in comparison to other turf adhesives.  
Indoor and outdoor use.  
**GISCODE RU 1**

**Two-component PU-based artificial turf adhesive**

- up to 20 % less consumption  
- also suitable for bad weather conditions  
- can be applied until 2 °C



**Unit size:** 12 kg + 1,8 kg Hardener PU (A+B)  
**Shipping unit:** 44/pallet, hardener PU 6/carton  
**Consumption:** approx. 270 g/rm  
**Application:** notched trowel B3-B11  
**Processing time:** approx. 60 min.

### 842 EUROTAP F/843 EUROTAP T/ 849 EUROTAP U

High quality, tear-resistant underlay polyester fleece tapes for bonding artificial turf along the seams, in combination with Eurocol artificial turf adhesives.

#### 842 Eurotape F

KR-Seam Tape for football fields

#### 843 Eurotape T

- adhesion on both sides is possible, for overcrossing installation of tape (areas of game-line marking)

#### 849 Eurotape U

KR-Seam Tape universal  
- very high tensile strength  
- adhesive can be applied on both sides

#### Roll length/roll width:

842 Eurotape F: 100 lm x 30 cm  
843 Eurotape T: 100 lm x 30 cm  
849 Eurotape U: 100 lm x 30 cm  
\*other widths on request

#### Pallet size:

55 rolls/pallet (842)  
55 rolls/pallet (843)  
60 rolls/pallet (849)





# SPORT FLOORING SYSTEMS

## 833 EUROFINISH SPORT DUO

Very high quality, two component, Pu-based lacquer with excellent spreading properties. For the extreme abrasion resistance, highly-durable top coating of all basics of new, uncoated sports floor-coverings with linoleum, parquet, new suitable for re-coating of used subfloor covering certified according to German standard DIN 18032 in combination with sport floor maintenance **897 Euroclean Sport**. Emission-tested product according to DIBt principles. Meets requirements of ÖISS guidelines concerning sliding friction and gloss level. For indoor use only. Shipped in semi-mati. **GISCODE W 3/DD+**

**Two-component PU-dispersi-on-based sport-floor lacquer**  
- semi-matt  
- suitable for sports floor coverings according to DIN 18032



**Unit size:** 4,3 l + 0,26 l  
**Hardener** Aqua LE  
**Shipping unit:** 4/carton, 96/pallet  
**Consumption:** approx. 120 ml/m²  
**Application:** aqua micro-fiber roller 25 cm/60 cm  
**Drying time:** 4 - 5 hrs.  
**Pot life:** approx. 1,5 hrs.



## 863 EUROFINISH SPORT

High quality, matt and anti-slip, one-component PU-based lacquer with good spreading properties for high abrasion resistance and durable top coating for all kinds of uncoated sports linoleum and parquet which are used for sports flooring installation. Suitable for all sports floor coverings according to German standard DIN 18032 in combination with sports floor maintenance **897 Euroclean Sport**. Deliverable in half-matt. Emission-tested product according to DIBt principles. Meets requirements of ÖISS guidelines concerning sliding friction and gloss level. For indoor use only. **GISCODE W 2+**

**One-component PU-dispersi-on-based Sport Lacquer**  
- suitable for sports floor coverings according to DIN 18032  
- semi-matt, anti-slip resistant



**Unit size:** 10 l  
**Shipping unit:** 60/pallet  
**Consumption:** 120 ml/m²  
**Application:** aqua micro-fiber roller 25 cm/60 cm  
**Drying time:** 4 - 5 hrs.



## 897 EUROCLEAR SPORT

Self-shiny, dirt repelling polymer dispersion for initial and regular care of lacquered resilient and wooden sports floors. Dries to a slip-resistant protective coat which is resistant to staining, footstep/heel marking. Streak free drying, no polishing needed. Slip-resistant according to German standard DIN 18032. Certified for sports floors according to DIN 18032. **GISCODE GE 20**

**Clean & Care for sports floors**  
- artified for sports floors according to DIN 18032  
- resistant to staining and discoloration



**Unit size:** 10 l  
**Shipping unit:** 2/carton, 54/pallet  
**Consumption:** ca. 1 l/30 m²  
**Application:** wipe

## 809-A EUROCOLOR GAME LINE DUO

Highly abrasion resistant, semi-elastic curing, two-component, PU-based paint with high capacity for full area, one-layer coating of permitted resilient floor-covering (linoleum, vinyl, rubber and parquet floor-coverings). Ideal for game-line marking in sport halls. **Colors:** red, orange, yellow, blue, light blue, green, white and black. Contains solvents! Pay attention to the safety data sheet!

**Game Line Marking and full area covering**



**Unit size:** 0,5 kg combi (A+B), 3 kg combi (A+B) on request  
**Shipping unit:** 9/carton, 84/pallet  
**Consumption/Application:** approx. 60 rm/can with 5 cm line width  
**Application:** foam roller 6 cm  
**Drying time:** approx. 1 hrs.

# PARQUET INSTALLATION



# PRIMER

## 048 EUROPRIMER PLUS

High-end, ready-to-use dispersion primer for absorbent and non-absorbent cement- and calcium sulphate- (gypsum) based subfloors (screed), gypsum-based floor boards such as Fermacel, Knauf, wooden composites, stone, ceramic and mastic asphalt. Ideal before levelling works to ensure overall equal absorbency, to bind dust and to cover old adhesive residues according to data sheet. Suitable for underfloor heating systems. Direct installation of wooden floors possible with recommended Eurocol Adhesive.

For indoor use only.

Very low VOC emission. Solvent-free.

**EMICODE EC 1 Plus**

**Universal Primer under levelling compound and parquet adhesives**

- high end, universal
- ready to use
- very high water resistance
- blocks plasticizer migration

**Unit size:** 11,2 kg

**Shipping unit:** 60/pallet

**Consumption:** 80 - 90 g/m<sup>2</sup>

**Application:** roller, brush

**Drying time:** depending on application, approx. 60 - 120 min.

Following levelling or adhesive works possible within 72 hrs.



# ADHESIVES FOR PARQUET INSTALLATION

## 144 EUROMIX PU MULTI

Highly durable, fast curing, water- and solvent-free, two-component adhesive for laying all kinds of standard wood-floors, exotic wood on absorbent and non absorbent mineral-based subfloors, sanded mastic asphalt, wood composites, dry screeds which are permitted for parquet installation.

Usable for bonding of homogenous vinyl floor coverings in tiles (e.g. Colorex), rubber tiles with roughed backing (e.g. Norament), natural cork tiles.

Can be used on underfloor heating systems and on recommended Eurocol underlay. Emission-tested construction product according to DIBt principles. Cleaner for non-hardened materials: **815 Euroclean Handclean**. Subfloor preparation for inadequate and/or moist subfloor: **021 Euroblock Reno LE, 025 Euroblock Deep, 042 Euroblock Turbo**.

Quartz sand blinding is necessary.

For indoor use only.

Very low VOC emission.

**EMICODE EC 1 R Plus, GISCODE RU 1**

**Two-component PU-based parquet adhesive**

- easy to spread
- sanding of parquet after 24 hrs.

**Unit size:** 7 kg + 0,875 kg Hardener PU (A+B)

**Shipping unit:** 60/pallet

**Consumption/Application:** 900 - 1000 g/m<sup>2</sup> notched

trowel B3

1100 - 1300 g/m<sup>2</sup> notched

trowel B11 - B15

**Installation time/Pot life:**

up to approx. 40 min.



## 147 EUROMIX 2C EPU

Elastically hardening, highly durable, water- and solvent-free, two-component adhesive for laying all kinds of standard wood-floors, exotic wood on absorbent and non absorbent mineral-based subfloors, sanded mastic asphalt, wood composites, dry screeds which are permitted for parquet installation. Can be used on underfloor heating systems and on recommended Eurocol underlay.

Cleaner: **815 Euroclean Handclean**. Subfloor preparation for inadequate and/or moist subfloor: **021 Euroblock Reno LE, 025 Euroblock Deep, 042 Euroblock Turbo**. Quartz sand blinding is recommended.

For indoor use only.

**GISCODE RU 1**

**Two-component PU-based parquet adhesive**

- hardens elastically
- removable from varnished surfaces of parquet elements
- long installation time

**Unit size:** 11,7 kg + 0,875 kg hardener LOT

**Shipping unit:** 48/pallet

**Consumption/Application:** 1000 - 1100 g/m<sup>2</sup> notched

trowel B3 1100 - 1300 g/m<sup>2</sup>

notched trowel B11 / B15

**Installation time/Pot life:**

up to 80 min.



## 148 EUROMIX WOOD

Elastically hardening, highly durable, fast curing, water- and solvent-free, two-component adhesive for laying all kinds of standard wood-floors, exotic wood on absorbent and non absorbent mineral-based subfloors, sanded mastic asphalt, wood composites and dry screeds which are permitted for parquet installation. Can be used on underfloor heating systems and on recommended Eurocol underlay.

Cleaner: **815 Euroclean Handclean**. Subfloor preparation for inadequate and/or moist subfloor: **021 Euroblock Reno LE, 025 Euroblock Deep, 042 Euroblock Turbo**. Quartz sand blinding is recommended.

For indoor use only.

**GISCODE RU 1**

**Two-component adhesive**

- hardens shear resistant
- easy to spread
- long installation time

**Unit size:** 9,625 kg combi (A+B)

**Shipping unit:** 48/pallet

**Consumption/Application:** 900 - 1000 g/m<sup>2</sup> notched

trowel B3 1100 - 1300 g/m<sup>2</sup> notched

trowel B11 / B15

**Installation time/Pot life:**

up to approx. 75 min.



# ADHESIVES FOR PARQUET INSTALLATION

## 154 EUROWOOD SF ULTRA

Hard, shear-resistant (ISO 17178), water- and solvent-free parquet adhesive based on STP, hardens without shrinking. For installation of strip parquet, mosaic parquet, multi-layer, solid parquet and permitted solid floor boards, for edge lamella parquet with minimum thickness of 10 mm, bamboo, smoked oak, especially surface treated parquets on suitable mineral-based subfloors and wooden composites, dry screed, mastic asphalt, recommended Eurocol decoupling and insulation mats which meet the requirements of parquet installation. For high step-sound improvement. Please consult when using on mastic asphalt. Easy to remove from varnished surfaces. Sanding and sealing after 48 hrs. Emission-tested construction product according to DIBt principles. Cleaner for non-hardened materials: **815 Euroclean Handclean**. Subfloor surface improvement, DPM of residual moisture: **021 Euroblock Reno LE, 042 Euroblock Turbo**. Quartz sand blinding is recommended. Binding of residual dust: **048 Europrimer Plus**.

For indoor use only.

Very low VOC emission.

**EMICODE EC 1 R Plus, GISCODE RS 10**

**One-component STP parquet adhesive**

- edge lamella parquet with min. 10 mm
- special use for large size wooden floor boards
- multipurpose

**Unit size:** 16 kg

**Shipping unit:** 33/pallet

**Consumption/Application:** 800 - 1000 g/m<sup>2</sup> notched

trowel B3, 1000 - 1200 g/m<sup>2</sup>

notched trowel B11/B15

**Installation time:** approx.

30 min.



## 157 EUROWOOD MS

Hard-elastic, water- and solvent-free parquet adhesive based on STP, hardens without shrinking. For installation of strip parquet, multi-layer, solid parquet and permitted solid floor-boards up to 220 cm length, for edge lamella parquet with minimum thickness of 16 mm, bamboo, smoked oak, especially surface treated parquet on suitable mineral-based subfloors and wooden composites, dry screed, mastic asphalt, recommended Eurocol decoupling and insulation mats which meet the requirements of parquet installation. For high step-sound improvement. Usually no primer necessary. Easy to remove from varnished surfaces. Sanding and sealing after 48 hrs. Emission-tested construction product according to DIBt principles. Cleaner for non-hardened materials: **815 Euroclean Handclean**. Subfloor surface improvement, DPM of residual moisture: **021 Euroblock Reno LE, 042 Euroblock Turbo**. Quartz sand blinding is recommended.

For indoor use only.

Very low VOC emission.

**EMICODE EC 1 R Plus, GISCODE RS 10**

**One-component STP parquet adhesive**

- strong adhesive
- multipurpose

**Unit size:** 16 kg

**Shipping unit:** 33/pallet

**Consumption/application:** 800 - 1000 g/m<sup>2</sup> notched

trowel B3, 1000 - 1200 g/m<sup>2</sup> notched

trowel B11 / B15

**Installation time:**

approx. 30 min.



## 159 EUROWOOD PRO

Elastic, water- and solvent-free parquet adhesive based on STP, hardens without shrinking. For installation of suitable multi-layer parquet onto mineral-based subfloors, wooden composites which meet the requirements for parquet installation. For step-sound improvement, usually no primer necessary, easy to remove from varnished surfaces. Emission-tested construction product according to DIBt principles. Cleaner for non-hardened materials: **815 Euroclean Handclean**. Subfloor surface improvement, DPM of residual moisture: **021 Euroblock Reno LE, 042 Euroblock Turbo**. Quartz sand blinding is recommended.

For indoor use only.

Very low VOC emission.

**EMICODE EC 1 R Plus, GISCODE RS 10**

**One-component STP parquet adhesive**

- special use for multi-layer parquet

**Unit size:** 16 kg

**Shipping unit:** 33/pallet

**Consumption/Application:** 900 - 1100 g/m<sup>2</sup> notched

trowel B3, 1000 - 1200 g/m<sup>2</sup> notched

trowel B11 / B15

**Installation time:** up to

approx. 20 min.



# ADHESIVES FOR PARQUET INSTALLATION

## 554 EUROSTAR PARQUET PLUS

One-component, ready-to-use, fast hardening, shear-resistant, dispersion-based adhesive with very low water content. To use for laying permitted standard mosaic, strip, multilayer (up to 1200 mm length), massive and edge lamella parquet 22 mm on mineral-based subfloors and wooden composites which meet the requirements for parquet installation. Please consider the manufacturer's approval for dispersion-based adhesives. Emissions-tested construction product according to DIBt principles. For indoor use only. Very low VOC emission. **EMICODE EC 1, GISCODE D 1, Blue Angel Label** (high standard certified environmentally friendly product) UZ 113

**Universal dispersion-based adhesive**  
- premium quality



**Unit size:** 22 kg  
**Shipping unit:** 24/pallet  
**Consumption/Application:**  
800-900 g/m<sup>2</sup> notched trowel B3, 900-1100 g/m<sup>2</sup> notched trowel B11  
**Installation time:**  
up to approx. 15 min.



## 150 PARQUET DOCTOR

Moisture curing, polymer-based adhesive to repair small hollows and gluing imperfections under glued down parquet.

**For repair of hollow spots under parquet**



**Unit size:** 750 g  
**Shipping unit:** 6/carton  
**Consumption:** depends on hollows  
**Hardening time:** min. 3 hrs.

the strong connection



# PARQUET LACQUER & PARQUET OIL-WAX



# WOOD PUTTY AND PRIMERS

## 8802 EUROFILLER WOOD PLUS

Water-based, pre-filled wood putty solution to be mixed with dust remains from sanding parquet to create a spatula applicable putty for filling parquet joints up to 2 mm width.  
For indoor use only.  
**EMICODE EC 1 Plus, GISCODE W 2+, NMP-free**

### Wood filler solution



**Unit size:** 5 kg, 10 kg  
**Shipping unit:** 44/pallet, 72/pallet  
**Consumption:** 50 - 150 g/m<sup>2</sup> depending on size and number of joints  
**Application:** double sided spatula  
**Drying time:** 30 - 60 min.



## 882 EUROPRIME BASE

Ready-to-use primer for all permitted, standard wood floors. To be used prior to Eurocol lacquers application to ensure perfect surface appearance after top lacquer. Emission-tested product according to DIBt principles.  
For indoor use only.  
Very low VOC emission.  
**EMICODE EC 1 Plus, GISCODE W 2+, NMP-free**

### Primer lacquer



**Unit size:** 5 l, 10 l  
**Shipping unit:** 4 /carton, 96/pallet (5 l), 60/pallet (10 l)  
**Consumption/Application:** approx. 30 ml/m<sup>2</sup> double-sided spatula, approx. 100 ml/m<sup>2</sup> aqua micro-fibre roller  
**Drying time:** 30 - 60 min.



## 857 EUROPRIME BLOCK PLUS

Dispersion-based primer to use before application of Eurocol parquet lacquers. Blocks top lacquers against wooden components which might cause problems with lacquer bonding and discoloration. Especially for smoked oak and exotic wood. Ideal for new floorings. Emission-tested product according to DIBt principles.  
For indoor use only.  
**GISCODE W3+, NMP-free**

### Blocking primer - solvent free



**Unit size:** 10 l  
**Shipping unit:** 60/pallet  
**Consumption:** approx. 120 ml/m<sup>2</sup>  
**Application:** aqua micro-fibre roller  
**Drying time:** 2 - 4 hrs, 12 hrs. with two coat application



## 865 EUROPRIME BLOCK

Primer (containing solvents) to use before application of Eurocol parquet lacquers. Blocks top lacquers against wood components and residues which might cause problems with lacquer bonding and discoloration. Especially for exotic wood, smoked oak. Ideal for renovation of old floorings. Hazardous material: please consider security advices!  
For indoor use only.  
**GISCODE G 1**

### Blocking primer, for exotic wood - primer for renovation and exotic wood - light, warm-toned wood grain accentuation



**Unit size:** 10 l  
**Shipping unit:** 60/pallet  
**Consumption:** 100 ml/m<sup>2</sup>  
**Application:** aqua micro-fibre roller  
**Drying time:** 12 hrs. up to max. 24 hrs.

# PARQUET LACQUER

## 832 EUROFINISH DUO

Dispersion-based two-component lacquer for durable sealing of all kinds of permitted standard wood floors. Wear resistant class C according to Austrian standard C 2354. Emission-tested product according to DIBt principles.  
For indoor use only.  
**GISCODE W 2+/DD 1, NMP-free**

**Two-component Acrylic-based parquet lacquer**  
- silk matt, matt  
- object use, wear-resistant  
- very good mechanical/chemical resistance



**Unit size:** 4,3 l + 0,26 kg Hardener Aqua LE  
**Shipping unit:** 4/carton, 96/pallet  
**Consumption/Application:** 20 ml/m<sup>2</sup> double sided spatula 100 ml/m<sup>2</sup> aqua microfibre roller  
**Drying time:** approx. 15 min./application with double sided spatula, 2 - 3 hrs./application with aqua microfibre roller



## 855 EUROFINISH BASIC

Dispersion-based parquet lacquer for finishing of all kinds of permitted standard wood floors. For residential use. Emission-tested product according to DIBt principles. Wear resistant class A according to Austrian standard C2354.  
For indoor use only.  
**GISCODE W 2+, NMP-free**

**One-component Acrylic-PU-based lacquer**  
- gloss, silk matt, semi matt, matt  
- residential use



**Unit size:** 5 l, 10 l  
**Shipping unit:** 4/carton, 96/pallet (5 l), 60/pallet (10 l)  
**Consumption/Application:** approx. 30 ml/m<sup>2</sup> double-sided spatula, approx. 120 ml/m<sup>2</sup> aqua micro-fibre roller  
**Drying time:** approx. 30 min/coating, double-sided spatula, 4 hrs./coating aqua micro-fibre roller



## 858 EUROFINISH M PROTECT

Dispersion-based, one-component parquet lacquer for finishing of all kinds of permitted, standard wood floors. Hardens with atmospheric oxygen to a scratch and abrasive resistant finish with excellent resistance to household chemicals. Finally hardened lacquer film achieves almost the same chemical and mechanical resistance and durability like a two-component lacquer. Emission-tested product according to DIBt principles. Wear resistant class C according to Austrian standard C 2354.  
For indoor use only.  
**GISCODE W 2+, NMP-free**

**One-component parquet lacquer**  
- silk matt  
- Characteristics of a two-component lacquer  
- Suitable over underfloor heating systems



**Unit size:** 10 l  
**Shipping unit:** 60/pallet  
**Consumption/Application:** approx. 30 ml/m<sup>2</sup>, double sided spatula approx. 120 ml/m<sup>2</sup>, aqua microfibre roller  
**Drying time:** approx. 20 min. with double sided spatula, 4 hrs. with micro-fibre roller



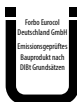
## 867 EUROFINISH EASY FUTURE

High quality, dispersion-based parquet lacquer with good spreading properties to use for durable sealing of all kinds of permitted standard wood floors. Wear resistant class C according to Austrian standard C 2354. Emission-tested product according to DIBt principles. Meets anti-slip rate R9 according to BGR 181 in combination with **873 Aqua Lacquer** additive.  
Suitable over underfloor heating systems.  
For indoor use only.  
**EMICODE EC 1, GISCODE W 2+, NMP-free**

**One-component PU-based parquet lacquer**  
- gloss, silk matt, matt  
- excellent surface appearance  
- suitable for residential areas



**Unit size:** 5 l, 10 l  
**Shipping unit:** 4/carton, 96/Pallet (5 l), 60/pallet (10 l)  
**Consumption/Application:** 30 - 50 ml/m<sup>2</sup> double sided spatula approx. 100 - 120 ml/m<sup>2</sup> aqua micro-fibre roller  
**Drying time:** approx. 30 min./application with double sided spatula, 3 - 4 hrs./application with micro-fibre roller



# PARQUET LACQUER

## 873 AQUA LACK ADDITIVE

873 Aqua lacquer additive for permitted Eurocol finishing lacquers to meet anti-slip rate R9 according to BGR 181, DIN 51130.

R9 Additive

Unit size: 0,1 kg for 5 l aqua lacquer



## 884N EUROFINISH PERFECT DUO

High-end product, two-component, PUR-dispersion-based parquet lacquer for extremely abrasion-resistant, hard-wearing, chemical-resistant sealing of all standard parquet and cork floors. For finishing of all kinds of permitted standard parquet. Creates an extremely durable scratch-resistant and chemically resistant surface. Wear resistant class C according to Austrian standard C 2354. Emission-tested product according to DIBt principles. Meets anti-slip rate R9 according to BGR 181 in combination with **873 Aqua Lacquer additive**. For indoor use only. Very low VOC emission. **EMICODE EC 1 R Plus, GISCODE W 2+/DD1, NMP-free**

**Two-component PU-based parquet lacquer**  
- silk matt, matt  
- object and residential use  
- very high chemical resistance  
- excellent wear resistance  
- for high stress areas

Unit size: 4,3 l + 0,26 kg Hardener Aqua LE  
Shipping unit: 4/carton, 96/pallet (4,3 l)  
Consumption/Application: approx. 30 ml/m<sup>2</sup> double sided spatula approx. 100 ml/m<sup>2</sup> aqua microfibre roller  
Drying time: approx. 20 min./application with double sided spatula, 3 hrs./application with aqua micro-fibre roller  
Processing time: approx. 4 hrs.



# PARQUET OIL-WAX

## 850 EUROFINISH OIL WAX

Ready to use, deeply penetrating mix of high quality waxes and natural oils to use for impregnation and care of absorbent wooden floors, wood-block pavement, cork. Can be rolled or applied by spatula. Pay attention to the suitability of the wood type. For project and residential areas with high traffic. Emission-tested product according to DIBt principles. Meets anti slip rate R9 according to BGR 181. Suitable over underfloor heating systems. For indoor use only. **GISCODE Ö 60**

**One-component Oil wax emulsion**  
- project and residential use  
- semi-matt  
- hard-wax oil

Unit size: 2,5 l  
Shipping unit: 2/carton, 144/pallet  
Consumption/Application: approx. 20 ml/m<sup>2</sup> double sided spatula approx. 50 ml/m<sup>2</sup> oil-wax velour roller  
Drying time: 8 - 10 hrs., 15 hrs./application



## 862 EUROFINISH HARD OIL HS

Ready to use, high solid content parquet and wood oil for finishing of all kinds of unsealed, permitted standard wooden floors. For project and residential areas with high traffic. Emission-tested product according to DIBt principles. Suitable over underfloor heating systems. For indoor use only. **GISCODE Ö 40**

**One-component Impregnation oil**  
- project and residential use  
- silk-matt

Unit size: 3 l  
Shipping unit: 126/pallet  
Consumption/Application: 25 - 30 ml/m<sup>2</sup> double sided spatula  
Drying time: approx. 72 hrs.



## 869 EUROFINISH OIL WAX DUO

High solid content, solvent- and water-free, two-component oil-wax paste for finishing of all kinds of permitted, unsealed standard wooden floors. Hardens very fast, enabling fast walkability. Provides excellent chemical resistance. Finished surface combines appearance of naturally oil-wax impregnated wooden-floor with excellent chemical resistance. Emission-tested product according to DIBt principles. Suitable on underfloor heating systems. For indoor use only. **GISCODE Ö 10**

**Two-component Impregnation oil**  
- for high traffic areas  
- enables fast walkability of sealed floor  
- silk-matt

Unit size: 0,9 l + 0,1 l Hardener  
Shipping unit: 1/carton, 240/pallet  
Consumption/Application: approx. 25 - 35 ml/m<sup>2</sup> double sided spatula  
Drying time between coatings: approx. 30 - 60 min.  
Accessibility: after approx. 4 hrs.  
Usability: after approx. 24 hrs. roller  
Processing time: 2 - 3 hrs.



# CLEANING AND MAINTENANCE OF OILED AND WAXED PARQUET

## 861 EUROCLEAN MILK

Care and maintenance product for manually waxed and oiled floors, based on natural waxes. Application undiluted or mixed with water. Can be polished with a soft, lint-free wipe after drying. Used in combination with **892 Euroclean Soap**. For indoor use only.  
**GISCODE GE 10**

**Floor milk**  
- maintenance for oiled-/waxed floors



**Unit size:** 700 ml, 5 l  
**Shipping unit:** 12/carton, 504/pallet (700 ml), 4/carton, 96/pallet (5 l)  
**Consumption/Application:**  
**Maintenance care:** approx. 75 ml on 8 l water, cloth initial care: 1 l for approx. 30 m², cloth  
**Drying time:** approx. 30 min.

## 877 EUROCLEAN WAX

Care product containing solvents, based on natural oils and waxes. To use for care of manually oiled and waxed parquet floors. Polishable, dirt repellent. Contains solvents! Pay attention to the safety data sheet! For indoor use only.  
**GISCODE Ö 60**

**Liquid wax**  
- wax polish



**Unit size:** 1 l  
**Shipping unit:** 7/carton, 300/pallet  
**Consumption:** 1 l for approx. 30 m²  
**Application:** cotton wipe or oil brush  
**Drying time:** 1 - 3 hrs.

## 879 EUROCLEAN OIL

Oil for cleaning and refreshing of manually oiled and waxed parquet and wooden surfaces in one working step. Improves significantly the wear resistance of all kinds wooden floors in particular of soft wood. Recommended for areas with high traffic like doorways, entrance areas. Contains solvent! Pay attention to the safety data sheet! For indoor use only.  
**GISCODE Ö 60**

**Care and refresh oil**  
- high traffic and residential use  
- oxidative curing



**Unit Size:** 2,5 l, 10 l  
**Shipping unit:** 4/carton, 240/pallet (2,5 l), 42/pallet (10 l)  
**Consumption/Application:** 80 - 100 ml/m² oil/wax roller or oil brush  
**Drying time:** approx. 24 hrs.

## 892 EUROCLEAN SOAP

Liquid soap for cleaning of manually oiled and waxed parquet and wooden surfaces with a lipid-regulating effect. To be added to mopping water. Used in combination with **861 Euroclean Milk**. For indoor use only.  
**GISCODE GU 40**

**Floor soap**  
- cleaner for oiled-/waxed parquet floors



**Unit size:** 700 ml, 5 l  
**Shipping unit:** 12/carton, 504/pallet (700 ml), 4/carton, 96/pallet (5 l)  
**Consumption/Application:** approx. 30 ml to 8 l cleaning water, cloth

the strong connection



TOOLS  
& MORE



# TOOLS & MORE

## MIXING BUCKET

prod.-no. 71654

Bucket for mixing levelling compounds.  
30 liters capacity.



## WATER BUCKET

prod.-no. 71660

Bucket with scale for measuring of precise water quantity for Eurocol powder products.  
10 liters capacity.



## MIXER

**With hexagonal fixing**  
prod.-no. 71655  
Mixer for screwing, for homogeneous mixing of Eurocol levelling compounds.

**With M14 thread fixing**  
prod.-no. 71657  
Mixer for screwing, for homogeneous mixing of Eurocol levelling compounds.



## NOTCHED TROWEL (56 cm), incl. double sided 4 mm toothed comb

prod.-no. 71662

For spreading levelling compounds exactly to a desired layer thickness and for getting an evenly distributed surface of all Eurocol levelling compounds over 5 mm.



## TROWELL (56 cm), with toothed blades

prod.-no. 71653

For spreading levelling compounds exactly to a desired layer thickness and for getting an evenly distributed surface of all Eurocol levelling compounds.  
Layer thickness 2 - 3 mm.



## REPLACEMENT BLADE FOR TROWEL (4 mm, 56 cm)

prod.-no. 71656

## EUROCOL SPIKE ROLLER (25 cm)

Prod.-no 71651

Spike roller for removing the air from freshly applied Eurocol levelling compounds.  
Spike length: 12 mm.



# TOOLS & MORE

## AQUA MICROFIBER ROLLER (25 cm), 11 mm Floor

prod.-no. 75082

Disposable roller for all types of aqua lacquers and primers.



## OIL WAX ROLLER (25 cm), 4 mm Floor

prod.-no 75089

Disposable roller especially for oil-wax systems.



## HANDLE (25 cm)

prod.-no 75083

For all Eurocol rollers and spike rollers.



## AQUA MICROFIBER ROLLER (60 cm), 11 mm Floor

prod.-no, 75091

Disposable roller for all types of aqua lacquers and primers in sports flooring.



## HANDLE (60 cm), adjustable 40 - 60 cm

prod.-no. 75090

Especially suitable for Eurocol-aqua microfiber roller.



## EUROTOOL LAQUER SCRAPER Plastic grid (29 x 27 cm)

prod.-no. 74197

High quality grid made of unbreakable and resistant plastic.  
Optimal for the usage of lacquer roller.



## FOAM ROLLER (10 cm)

prod.-no. 75095

Disposable roller for product **809A Eurocolor Game Line Duo**.



## ROLLER BOX ø 12 cm

prod.-no 75084

For storing and transporting used varnish rollers to prevent them from drying out.



# TOOLS & MORE

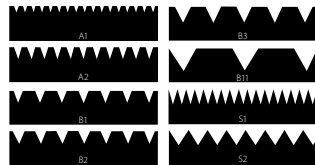
SPATULA HANDLE (28 cm)  
prod.-no. 74100

Spatula handle for sticking in notched trowels.



NOTCHED TROWELS (28 cm)  
prod.-no 74101

Double-sided toothed blades for applying adhesives for elastic flooring  
TKB (A1, A2, B1, B2, S1, S2) and for parquet B11, B3.



DOUBLE-SIDED SPATULA (27 cm)  
prod.-no. 75080

Stainless steel, for applying all suitable types of Eurocol parquet lac-  
quers, oils and waxes.



CM MOISTURE METER  
prod.-no. 71646

For measuring the residual moisture content of mineral screeds.

(Upon request)



TELESCOPING HANDLE (1 - 2 m)  
prod.-no. 75085

Extendible, aluminum, with bayonet connection.



JOINT CONNECTOR  
prod.-no. 71652

100 pcs./VE



# TOOLS & MORE

EUROCOL TROUSERS  
prod.-no. 73119 + 73120

perfect fit, durable materials.  
Knee part made of robust Cordura fabric, deep pockets,  
mobile phone pocket, contrast seams.  
Materials: 65 % polyester and 35 % cotton.

Fabric weight: 245 g/m²  
Color: molegrey, grain blue  
Size: M, L, XL



KNEE PADS  
prod.-no. 73123

Flame retardant LD-PE foam  
Color: gray  
Size: 24 cm x 20 cm  
100 pcs./VE



EUROCOL FLEECE JACKET  
prod.-no. 73121

Really good fit, pilling treated fleece, high heat effect.

Material: 100 % polyester  
Fabric weight: 245 g/m²  
Color: clove gray  
Size: M, L, XL (48, 50/52, 54/56)



EUROCOL POLO SHIRT  
prod.-no. 71648

3-button strip, neckband, arm end with ribbed cuffs, logo print on the  
back, tested accordion to Ökotex Standard 100.

Materials: 65 % polyester and 35 % cotton  
Fabric weight: 220 g/m²  
Color: royal blue  
Size: M - XL



EUROCLEAN REPAIR PAD, GREY  
prod.-no. 74180

Pad for linoleum, PVC, vinyl, rubber. For wet grinding and basic cleaning  
in combination with the **891 Euroclean Basic** (alkaline).  
Rinse the pad with warm water after use.

Size: Ø 410 mm  
Color: gray



EUROTOOL C FLOOR DISK 100 LINO  
prod.-no. 74190

Grinding plate for base cleaning and dry grinding of worn linoleum.  
With raised ring (74194) and coupling (74150).

Size: Ø 410 mm

Replacement lamellas on request.





## TOOLS & MORE

### C FLOOR DECOATER

prod.-no. 71670

One-pad scrubbing machine for linoleum, PVC, vinyl, rubber and LVT. For removing top-coat layer of slightly worn linoleum, for all vinyl, rubber, also structured/pimped floor covering such as LVTs, without the usage of chemicals.  
Plus: Vacuum device for dry grinding



### DECOATER PAD SANDWICH, blue

prod.-no. 74185

Base pad to use with all decoater-pads.

Size: □ 410 mm  
5 pcs./VE



### DECOATER PAD LINO/VINYL, brown

prod.-no. 74186

C FLOOR decoater cleaning pad for base cleaning of worn floor coverings made of linoleum or vinyl.

Size: □ 510 x 360 x 12 mm  
10 pcs./VE



### DECOATER PAD RUBBER/LVT, green

prod.-no. 74187

C FLOOR decoater cleaning pad for base cleaning of worn floor coverings made of rubber and LVT.

Size: □ 510 x 360 x 20 mm  
1 pcs.



### EUROTOOL HAND PAD HOLDER

prod.-no. 74191

Handpad holder for **Eurotool hand pads**.  
For sanding profile/skirting or hard-to-access areas.

Size: □ 250 x 115 x 25 mm



### EUROTOOL HAND PAD GREEN

prod.-no. 74188

For base cleaning or sanding of profiles/skirtings or hard-to-access areas, for light to medium stains.

Size: □ 250 x 115 mm, 22 - 25 mm thick  
10 pcs./VE



## TOOLS & MORE

### EUROTOOL HAND PAD BLACK

prod.-no. 74189

For base cleaning or sanding of profiles/skirtings or hard-to-access areas, for light to medium stains.

Size: □ 250 x 115 mm, 22 - 25 mm thick  
10 pcs./VE



### EUROTOOL MIXING CONTAINER

Allround lacquer container (22 l)  
prod.-no. 74196  
High quality lacquer container made of unbreakable and resistant plastic. For the best usage of **322 Eurofinish C Floor Duo** and other lacquers with lacquer roller.  
Easy and safe handling thanks to mobile rollers.



### EUROTOOL LAQUER SCRAPER

Plastic grid (29 x 27 cm)  
prod.-no. 74197  
High quality grid made of unbreakable and resistant plastic.  
Optimal for the usage of lacquer roller.

### EUROTOOL MIXING BAG

LDPE - mixing bag (800 x 600 x 0,050 mm), pack of 50  
prod.-no. 74198  
Transparent, good sliding with bottom seam.  
Ideal for filling and mixing **322 Eurofinish C Floor Duo** and other two-component aqua lacquers.

### VENTILATOR CASA FAN

prod.-no. 74192

Super-strong airflow for faster drying after base cleaning.  
3 different types of speed.  
Diameter: 550 mm



**Forbo Eurocol Deutschland GmbH**

August-Röbling-Str. 2 • D-99091 Erfurt

Phone: + 49 (0)361 730 41 -0 • Fax: + 49 (0)361 730 41-91

info.erfurt@forbo.com • www.forbo-eurocol.de

**Niederlassung Österreich**

c/o Kühne + Nagel Ges.m.b.H Terminal 1c

Gewerbepark 8 • A-8402 Werndorf

Phone: + 43 (5)90690 4046 • Fax: + 43 (5)90690 4057

kngrz.inland@kuehne-nagel.com



Eurocol is part of the Forbo Group